

# FULLER

Architectural Panels

## OUR TRACERY PANELS ARE LOOKING UP

We studied plaster-based tracery installations from around the world with the objective of fabricating similar stunning patterns in a more cost-effective format.

Consider this. The large format panels are designed to allow users to mix and match with any of the other large format designs therefore allowing for an endless combination of unique patterns. The small format panels are extremely affordable and light weight and can be installed by one person.

Our customizable products are milled out of PVC therefore are light weight, durable, paint/stain grade, affordable and installed with standard wood working tools and processes.

Available Thicknesses Include: 1/4", 1/2", 3/4", 1" and 1-1/2" (n/a Black)



Pattern FP90

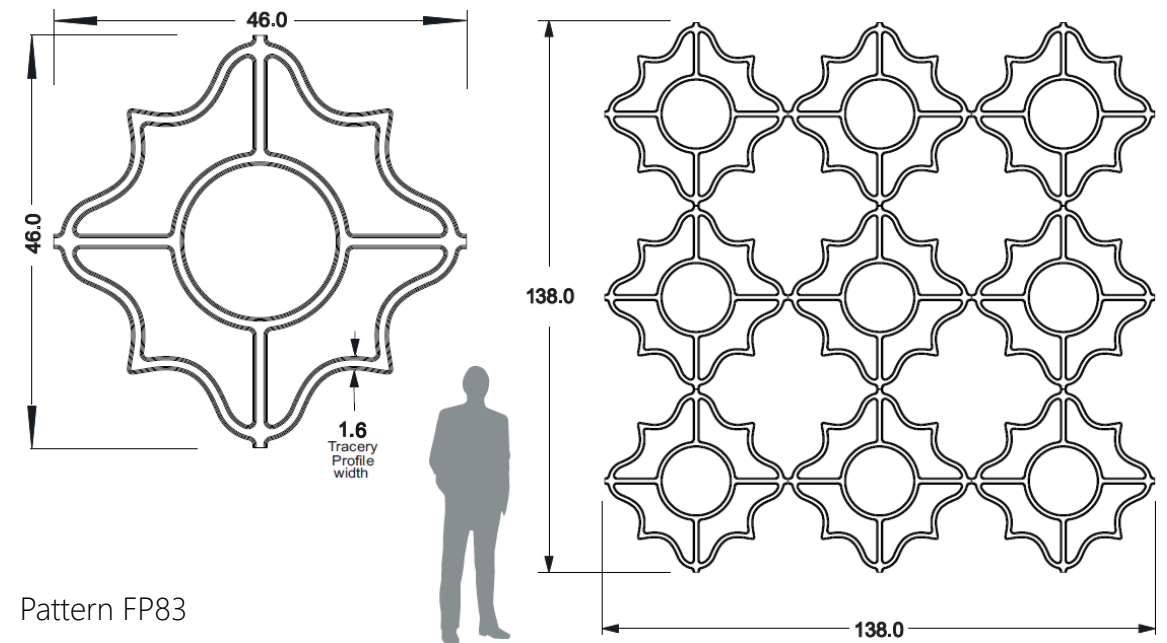
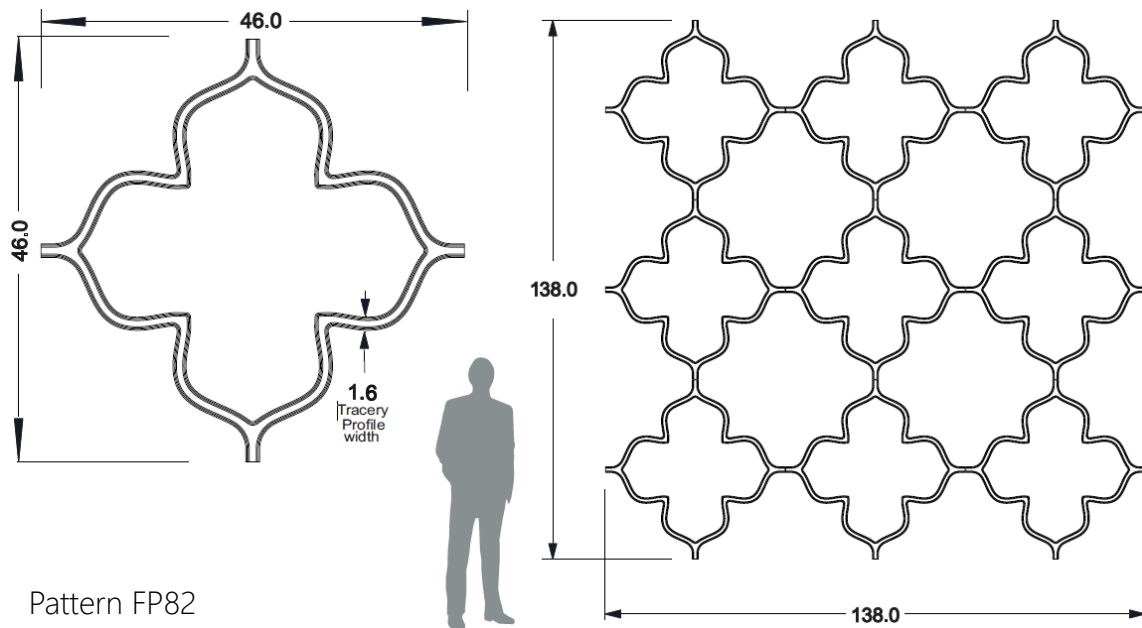
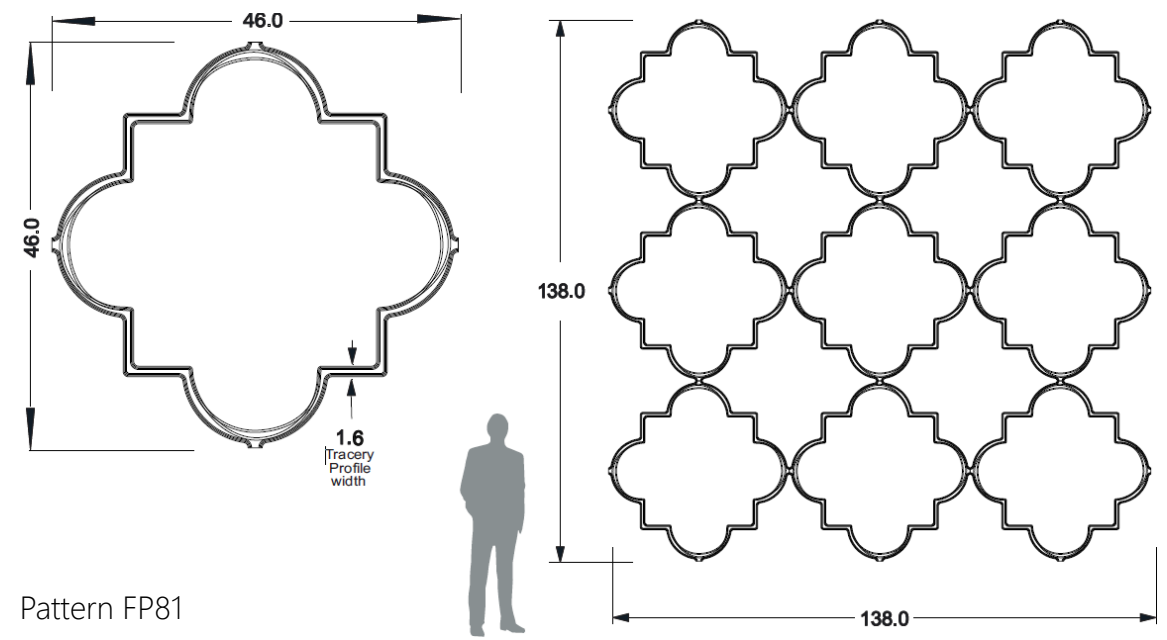
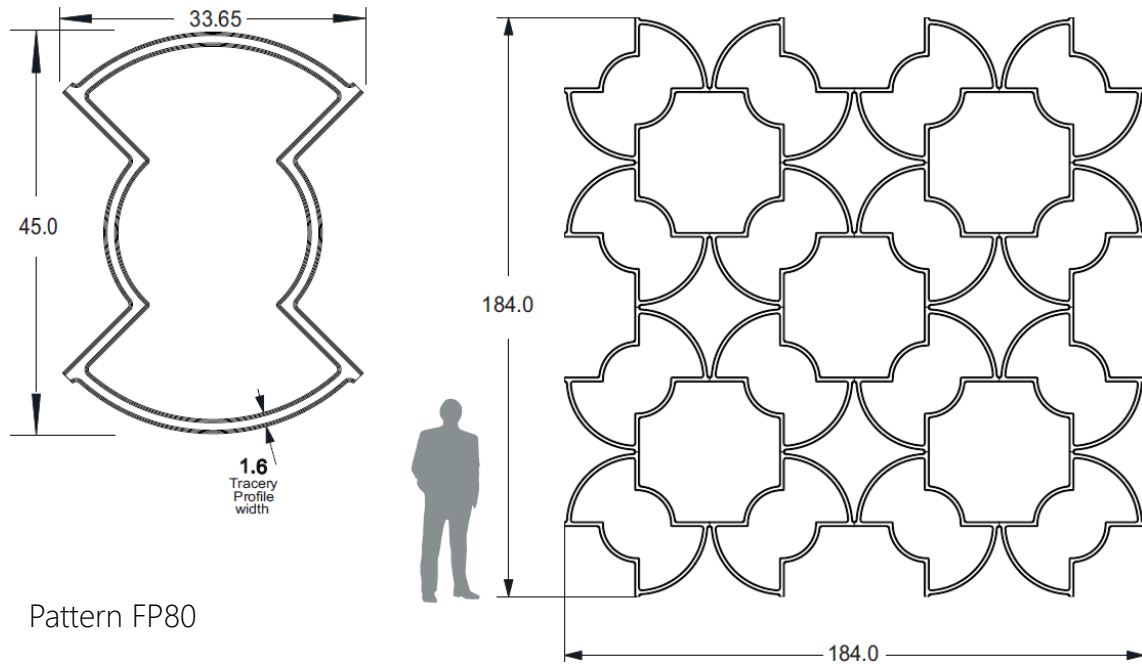




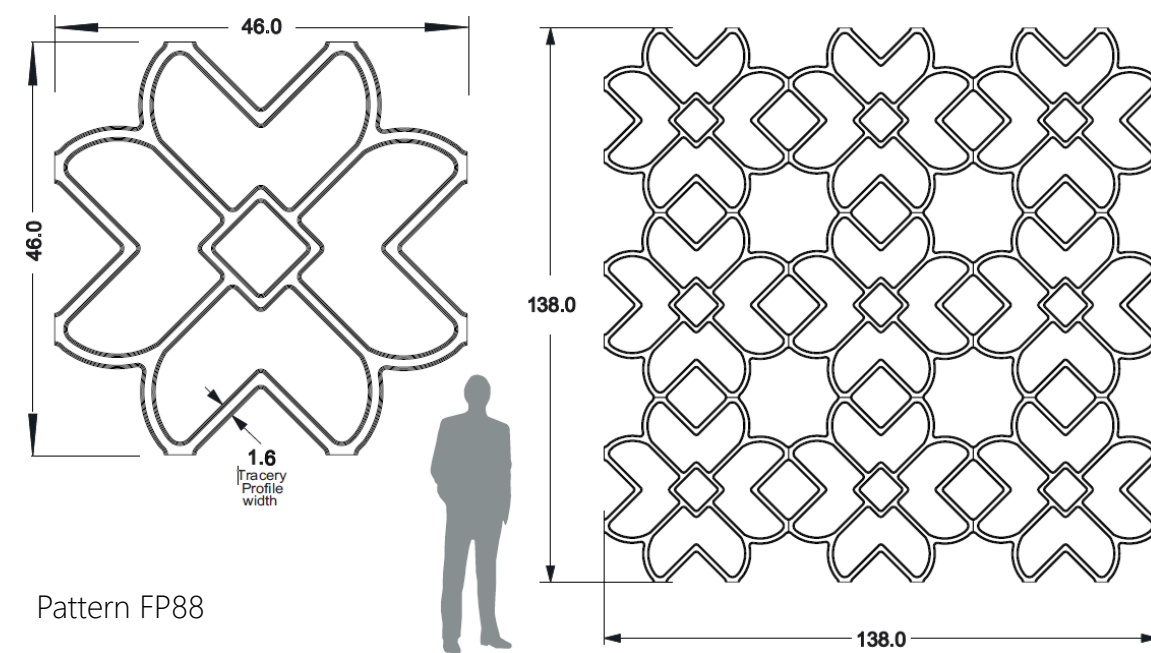
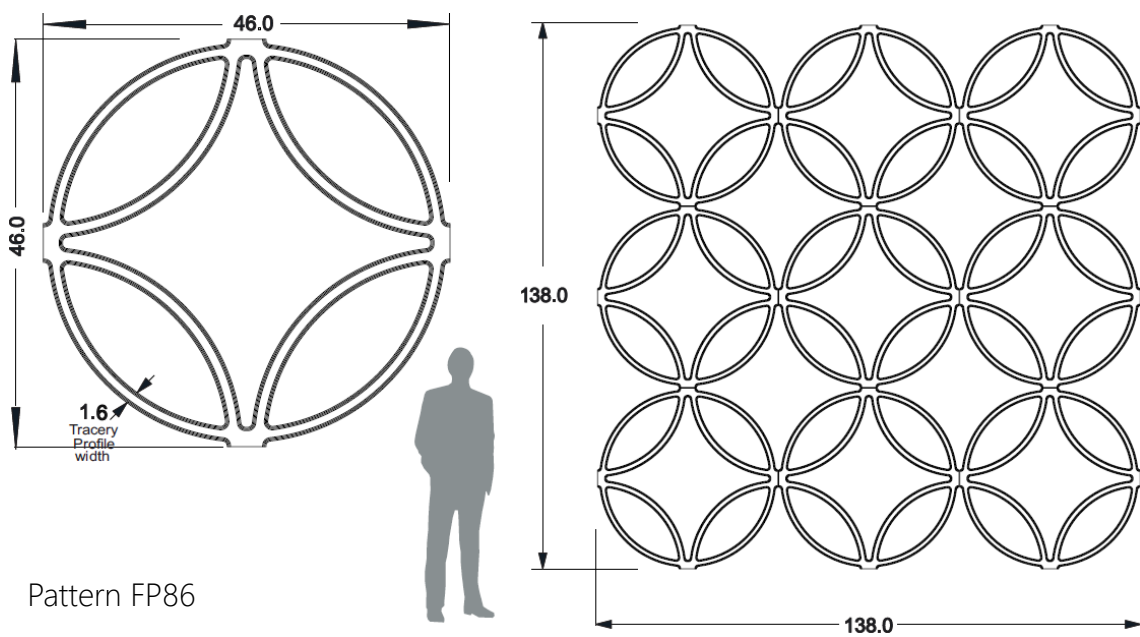
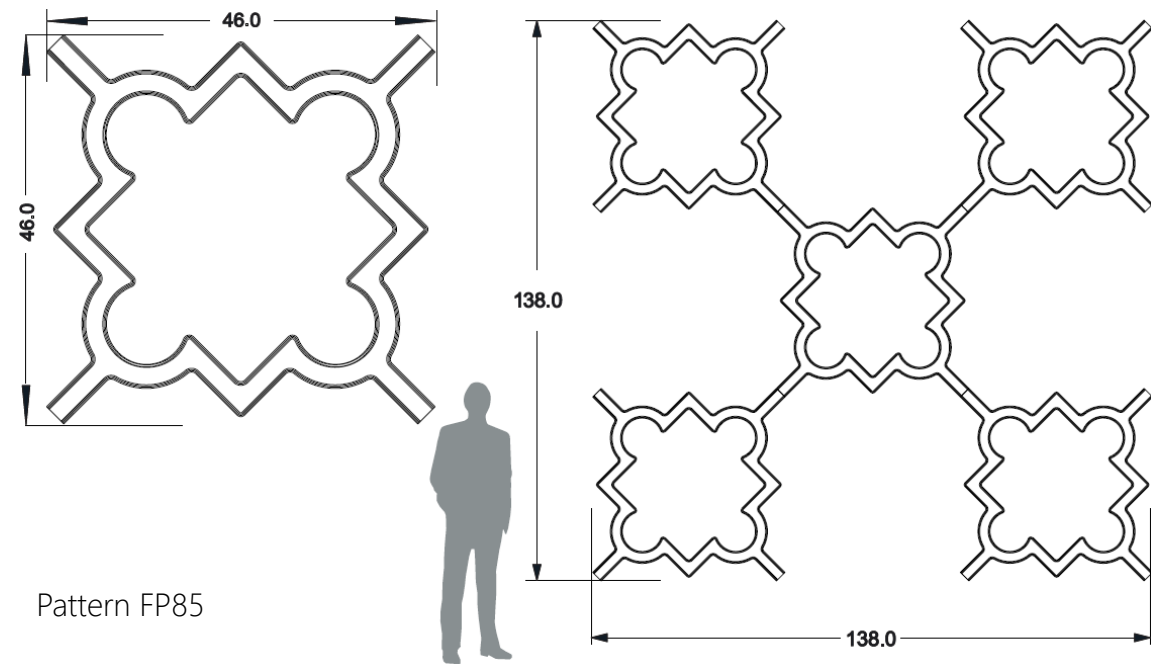
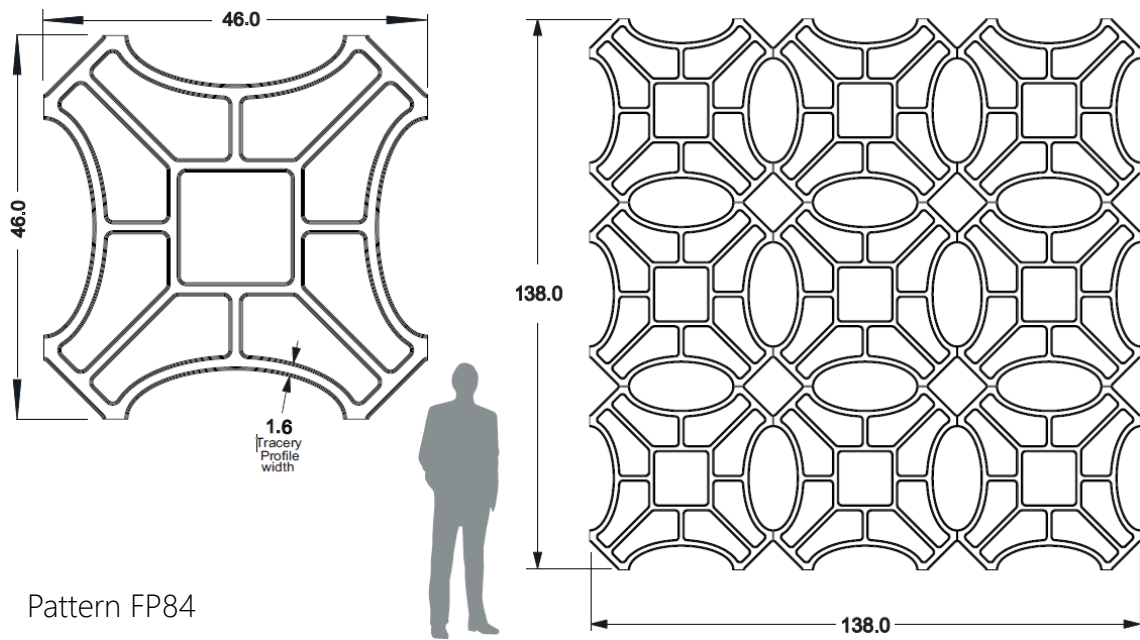
## Large Format Tracery Panels

Available Thicknesses Include: 1/4", 1/2", 3/4", 1" and 1-1/2" (n/a Black)

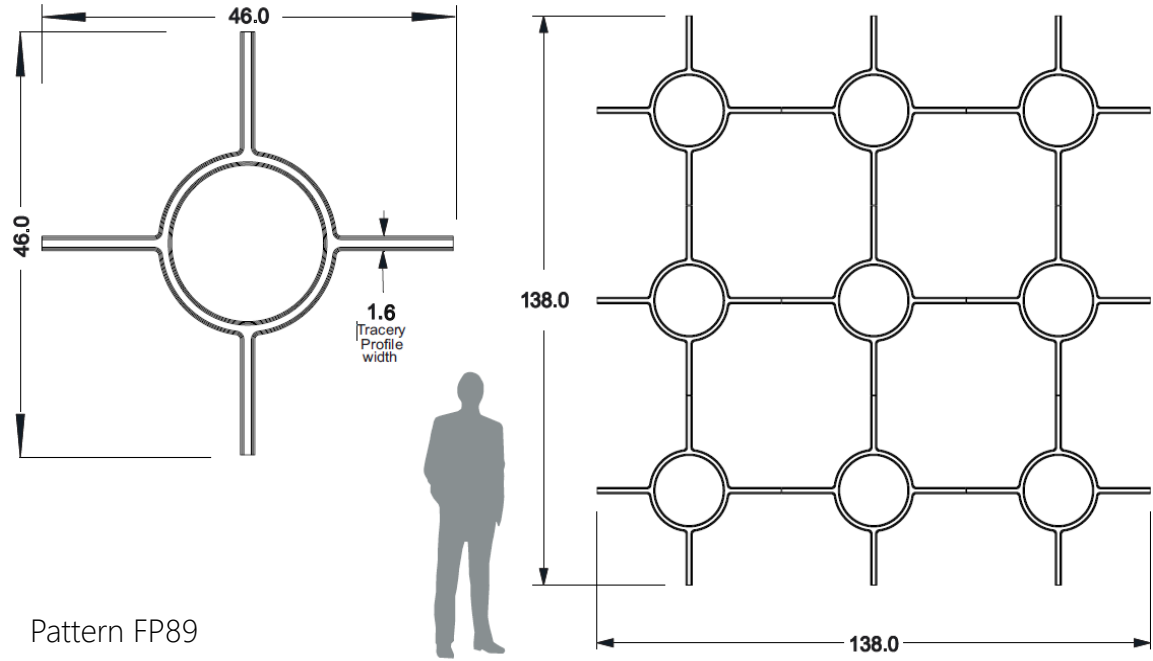
Pattern FP86



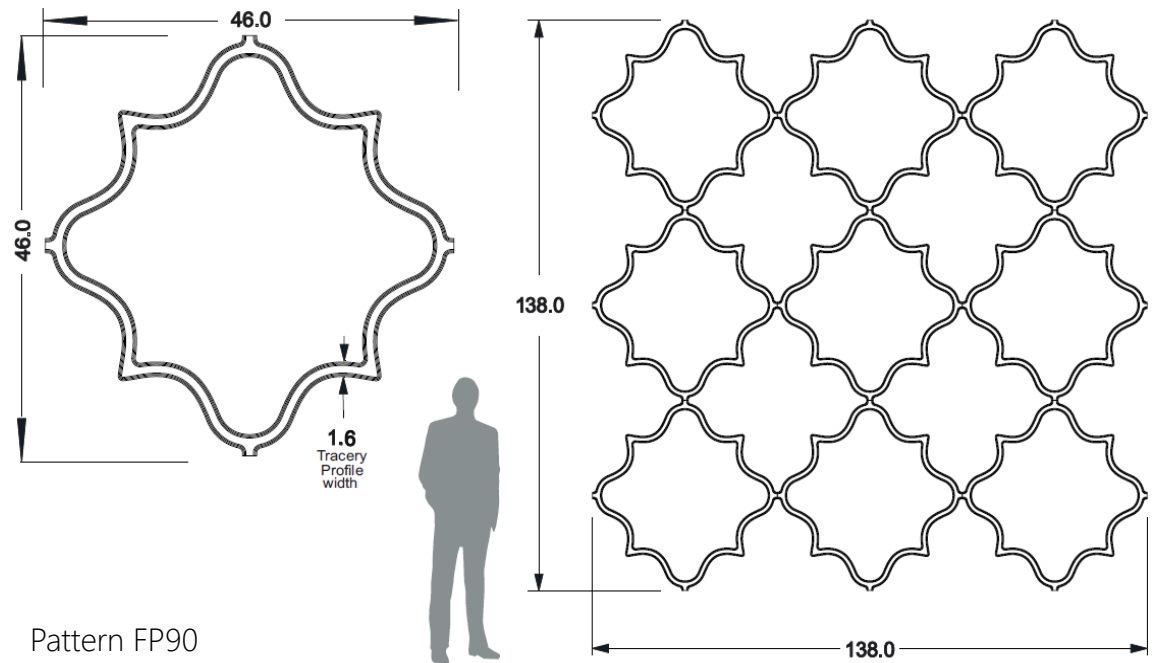








Pattern FP89



Pattern FP90



Gretchen Kennelly Design Group  
San Diego, California

Pattern FP89



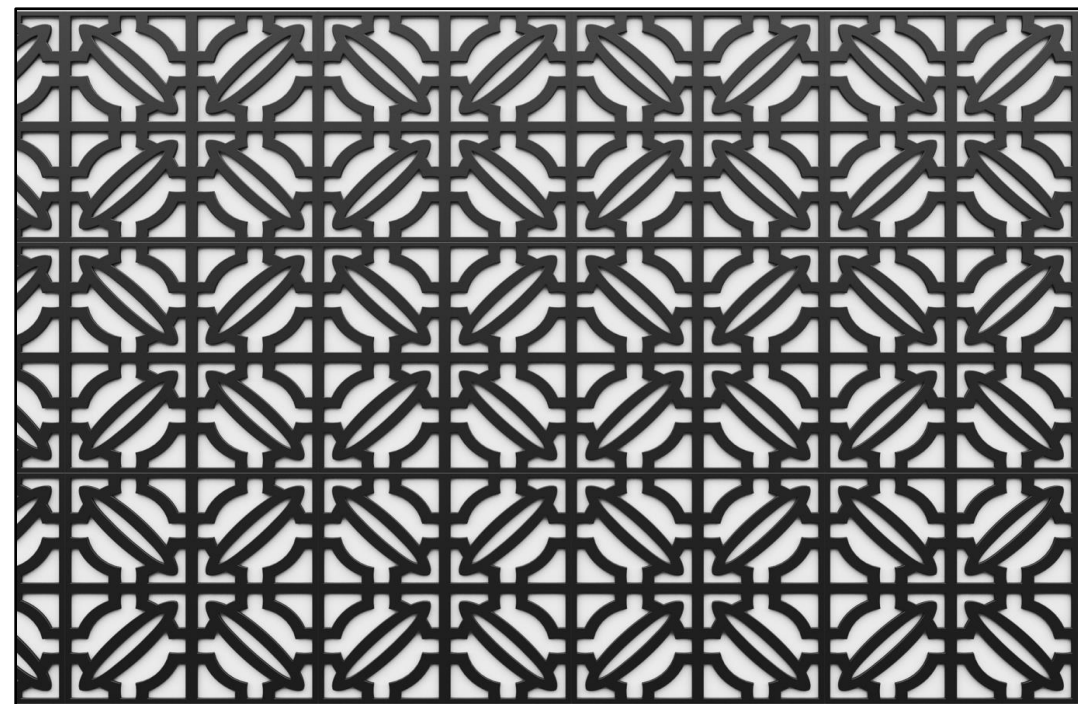
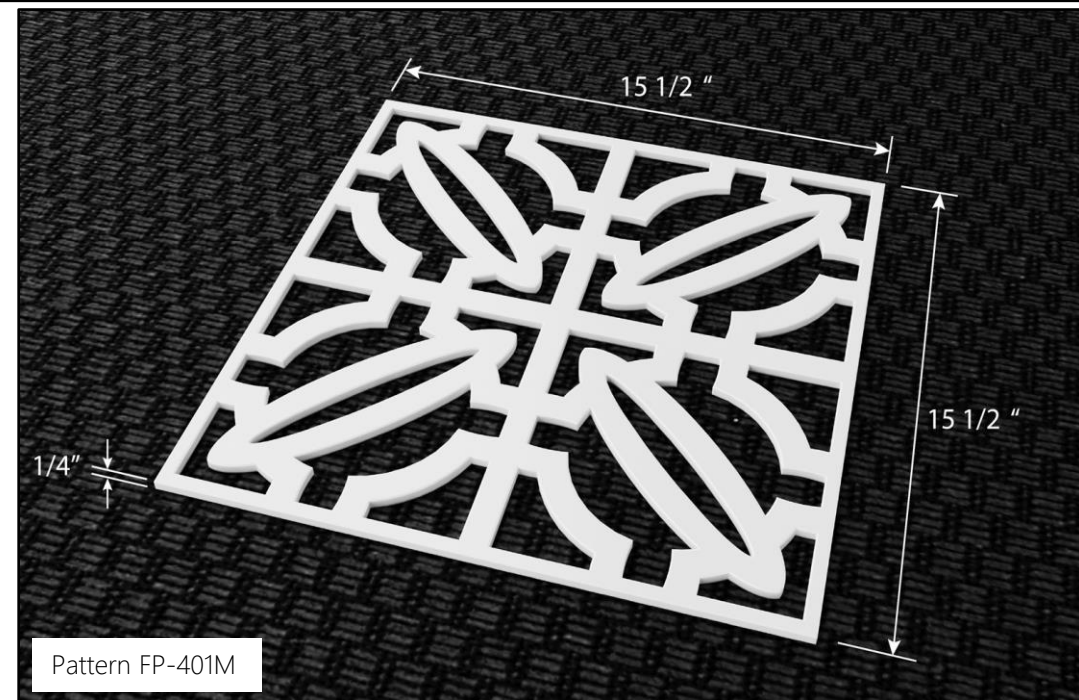


## Small Format Tracery Panels

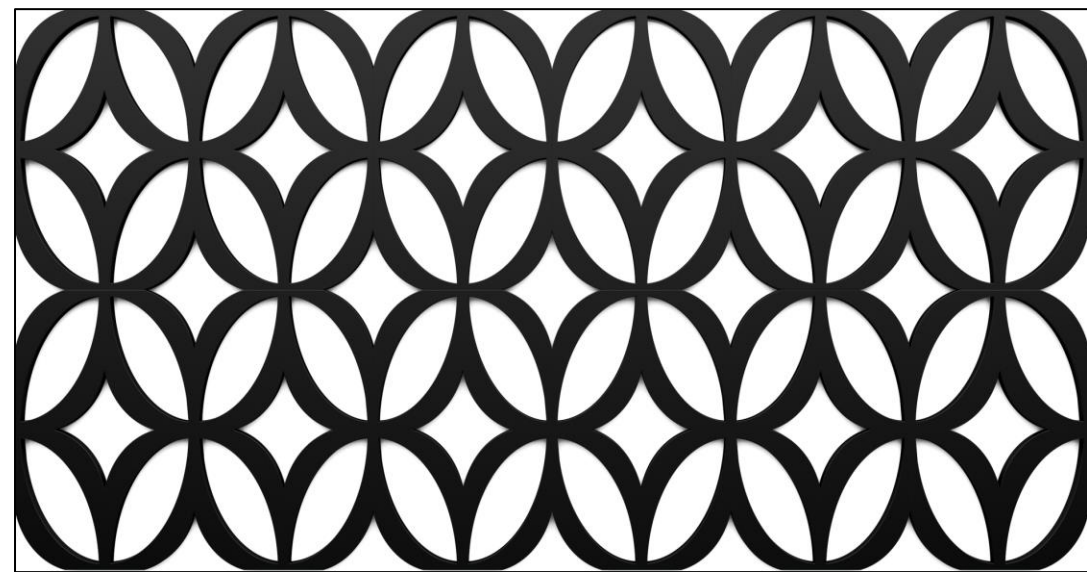
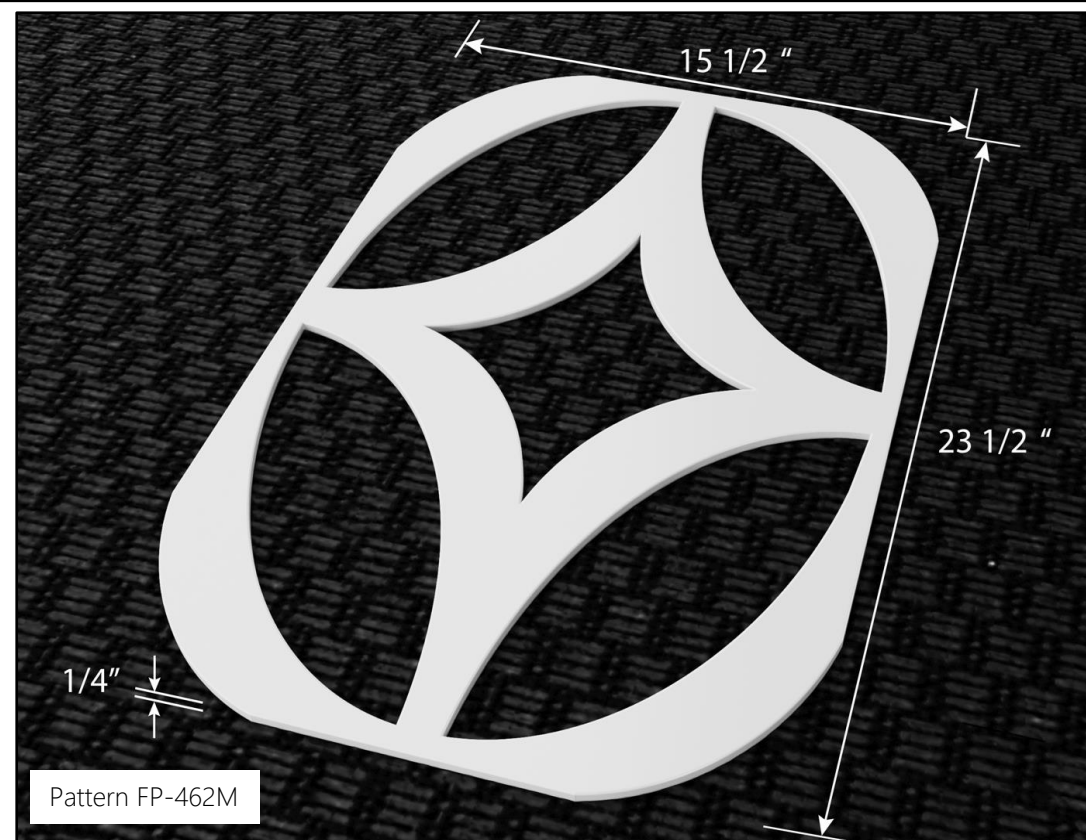
Available Thicknesses Include: 1/4", 1/2", 3/4", 1" and 1-1/2" (n/a Black)

Pattern FP401M

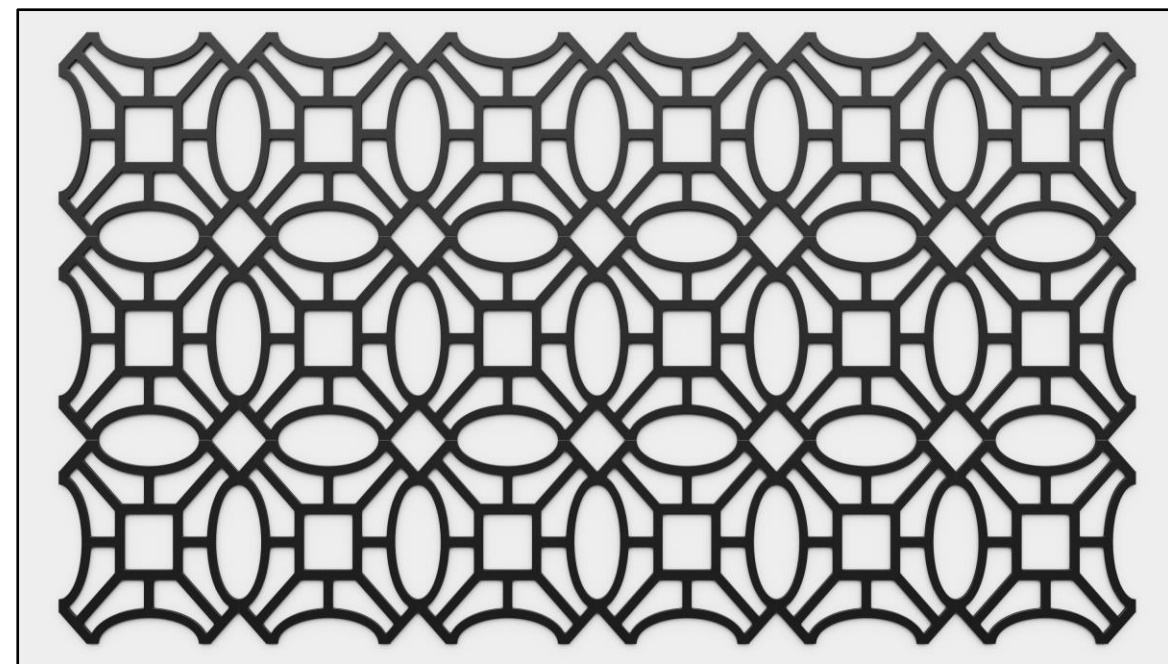
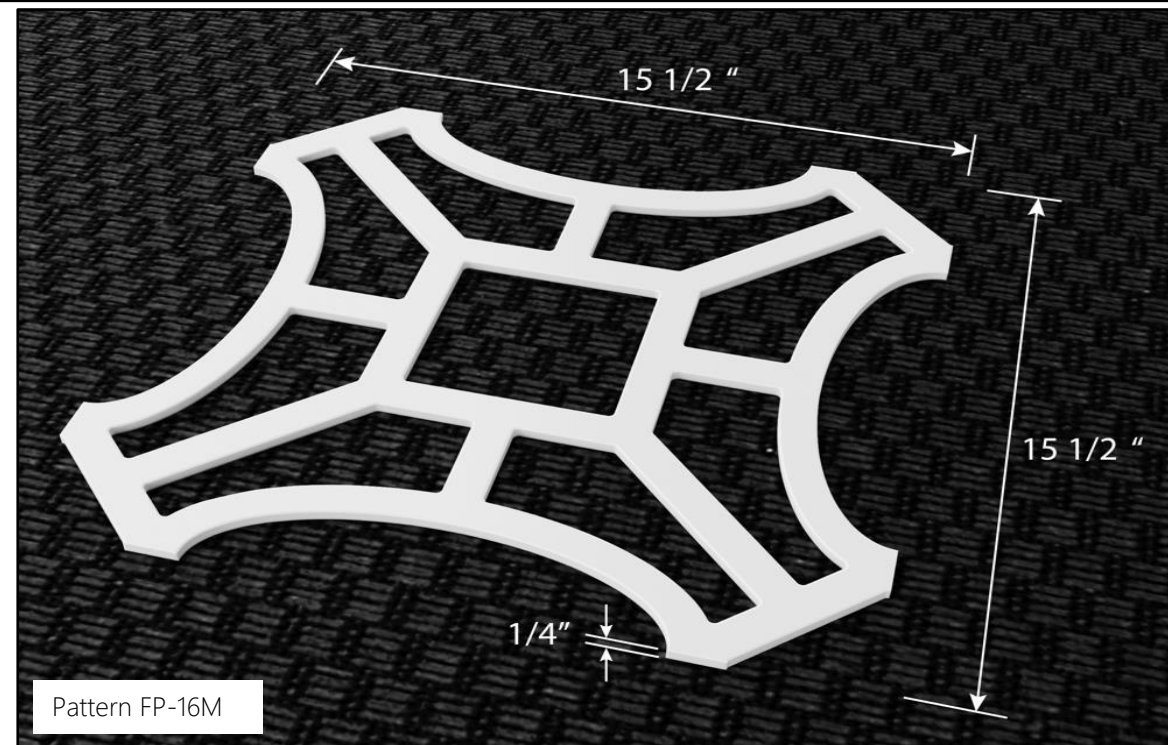


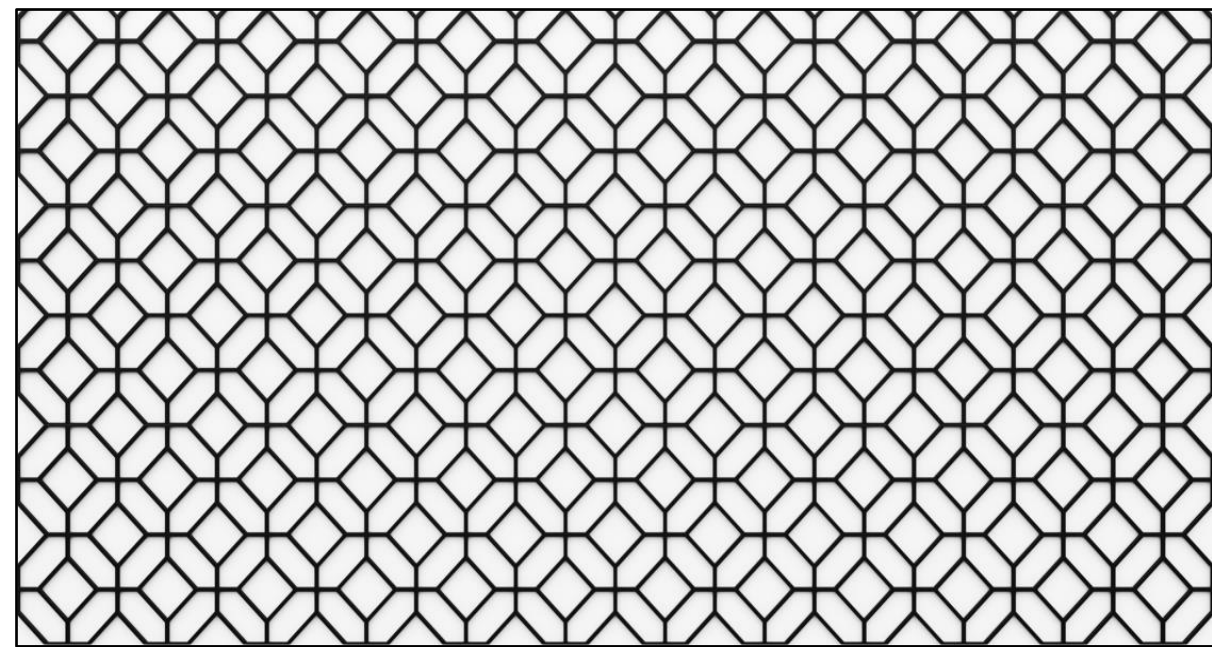
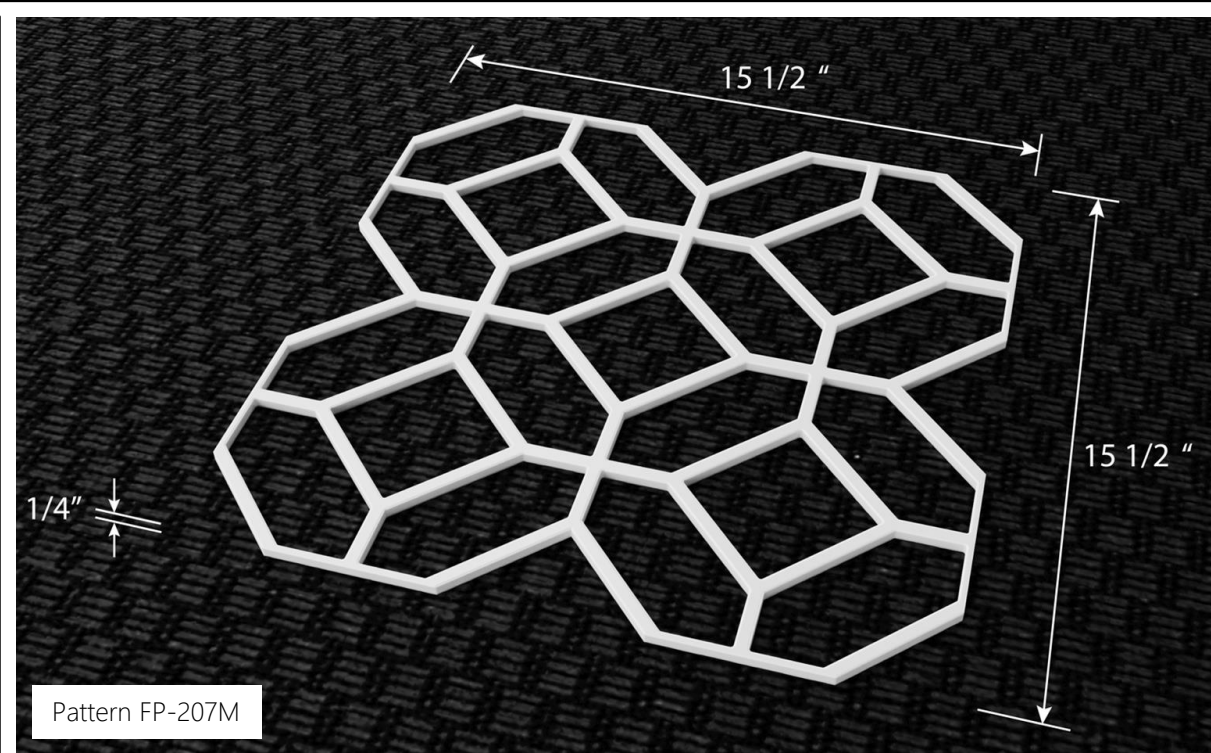




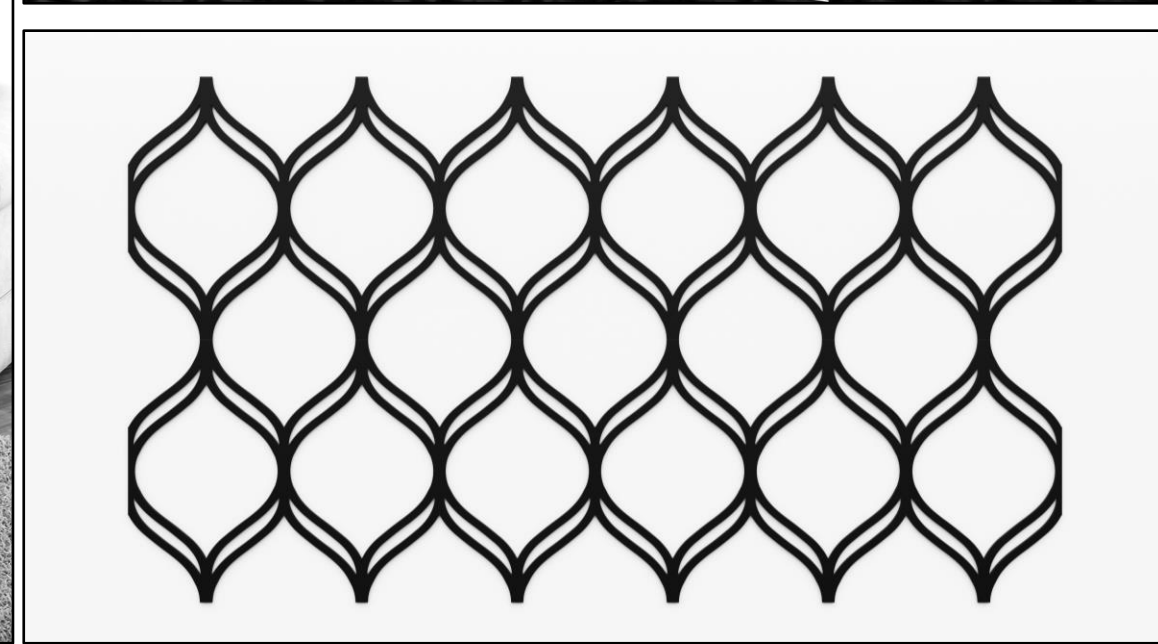
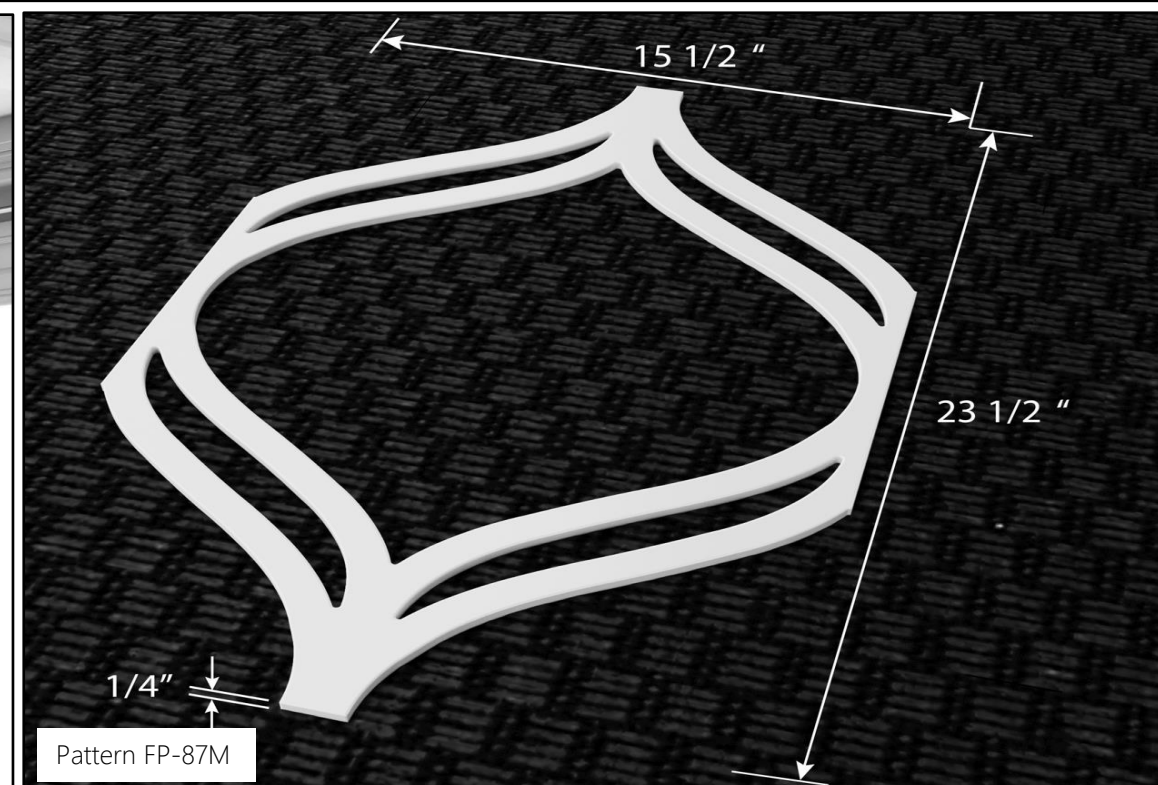


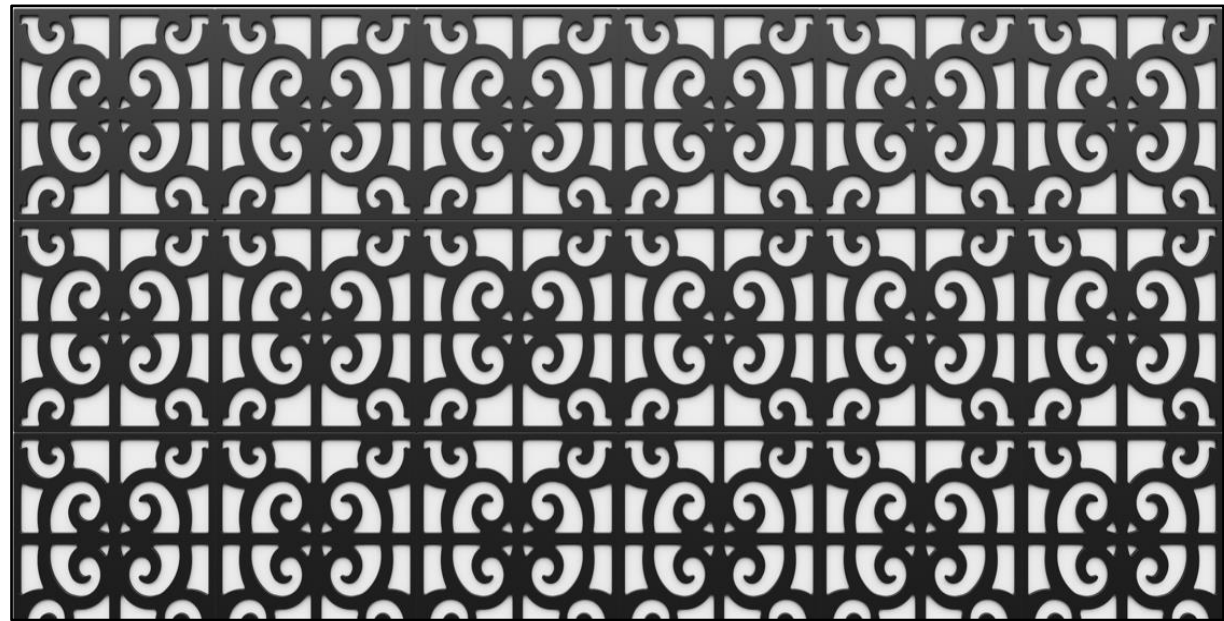
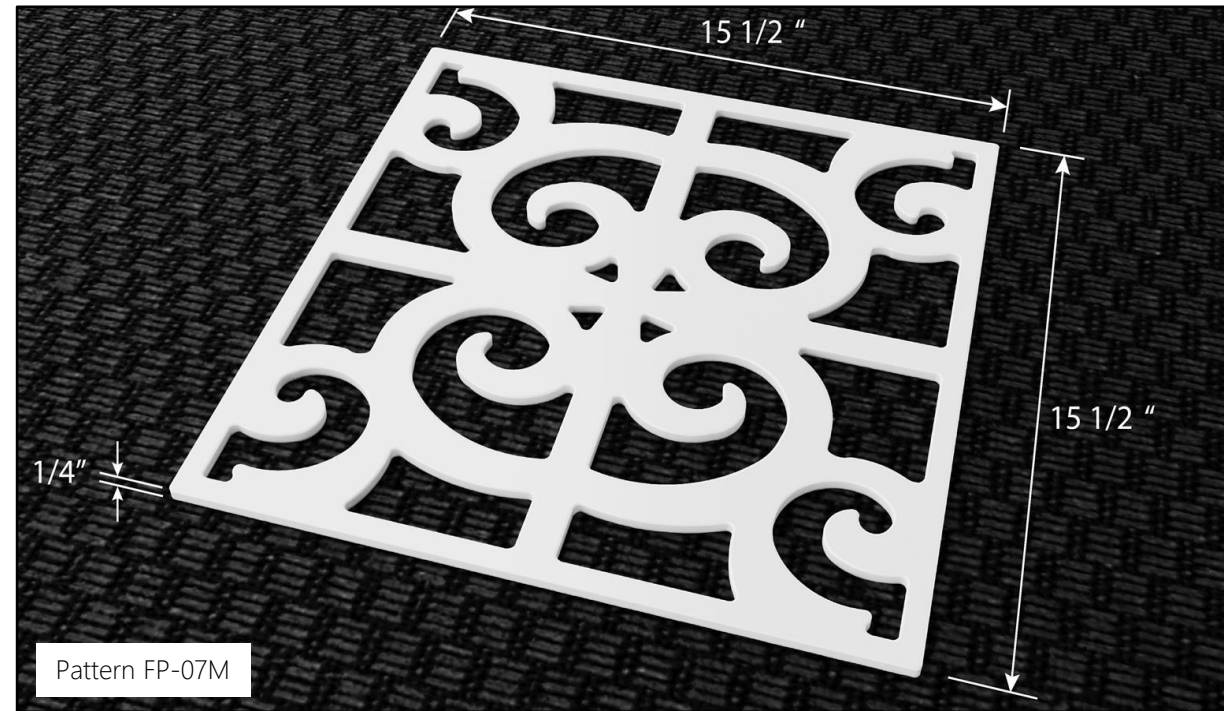






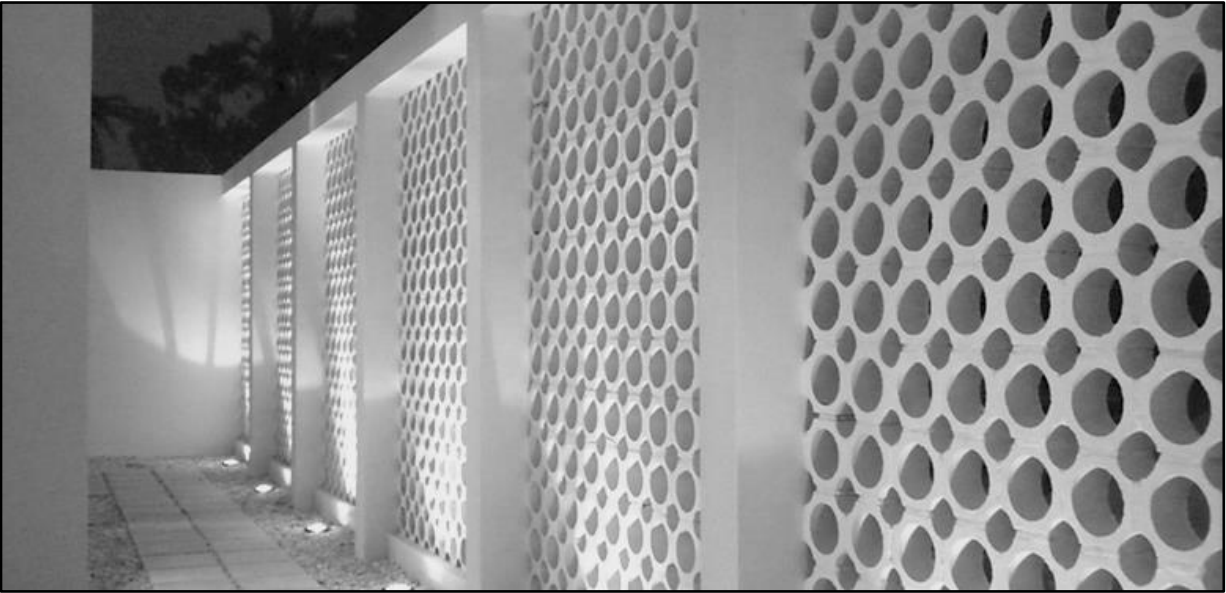


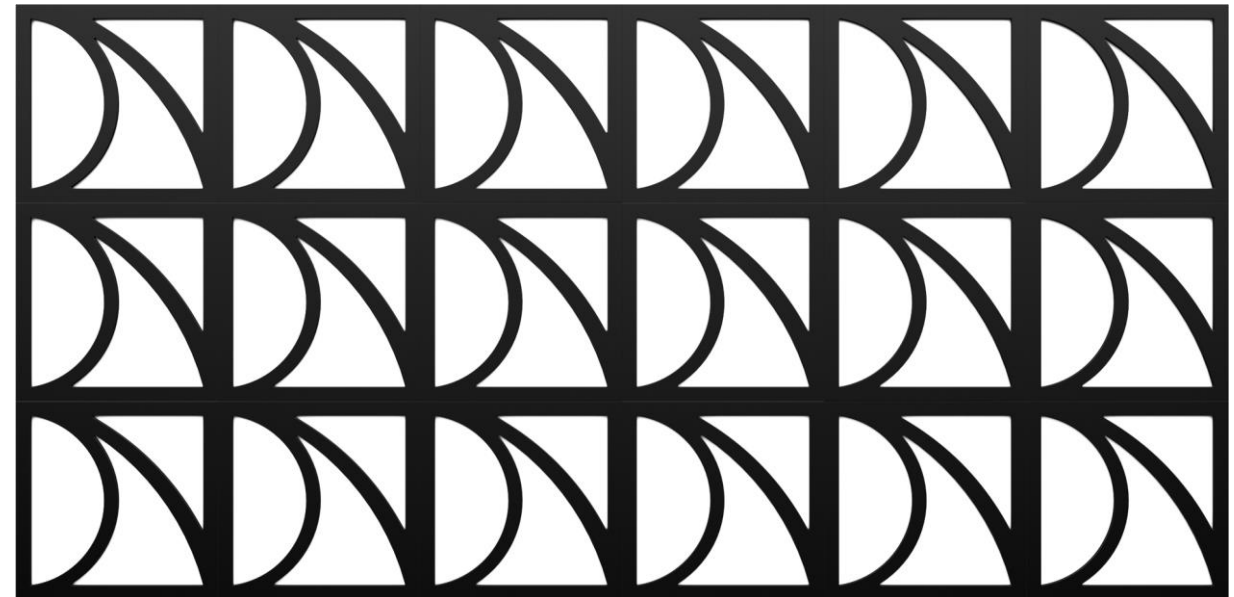
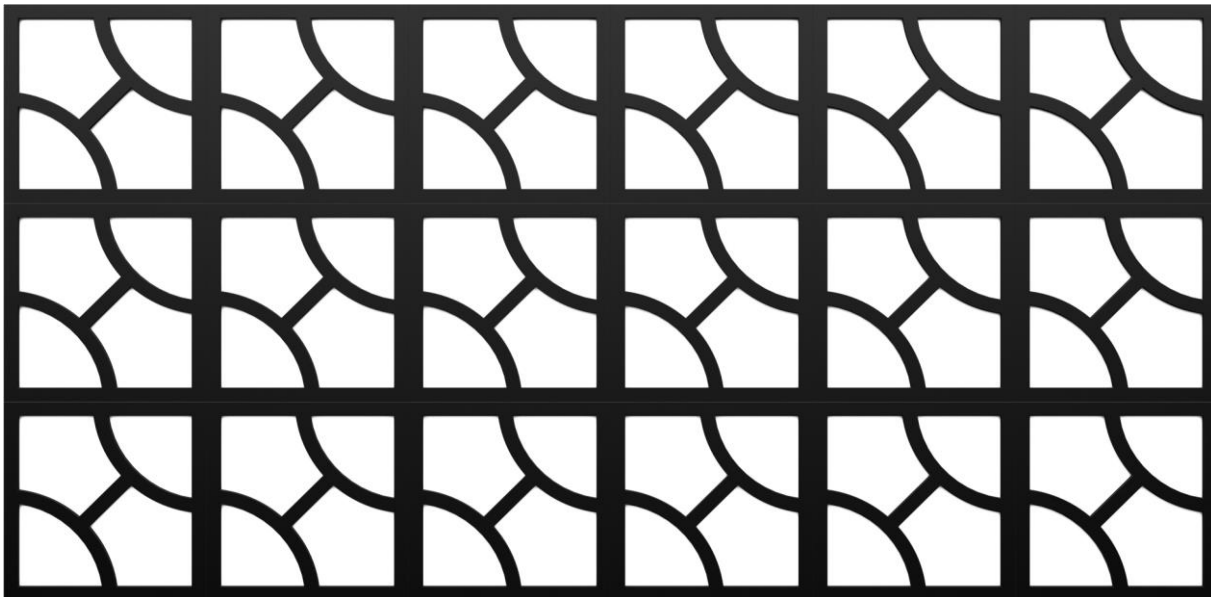
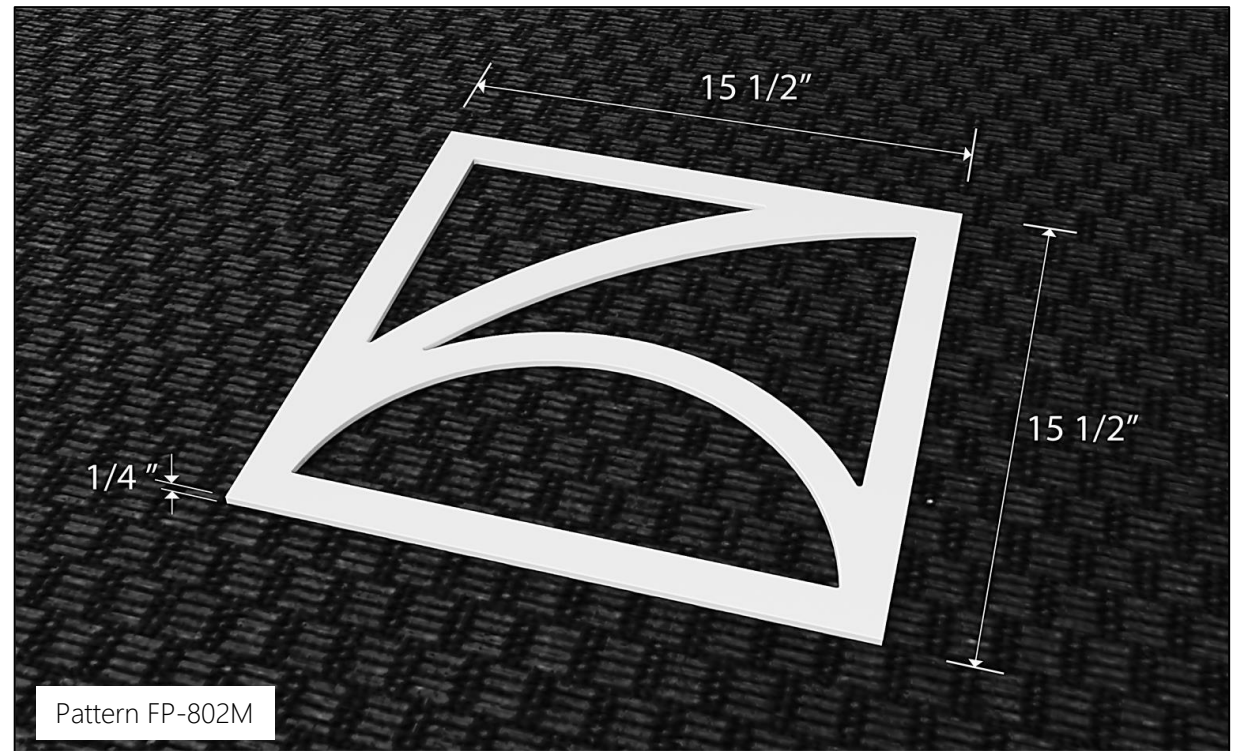
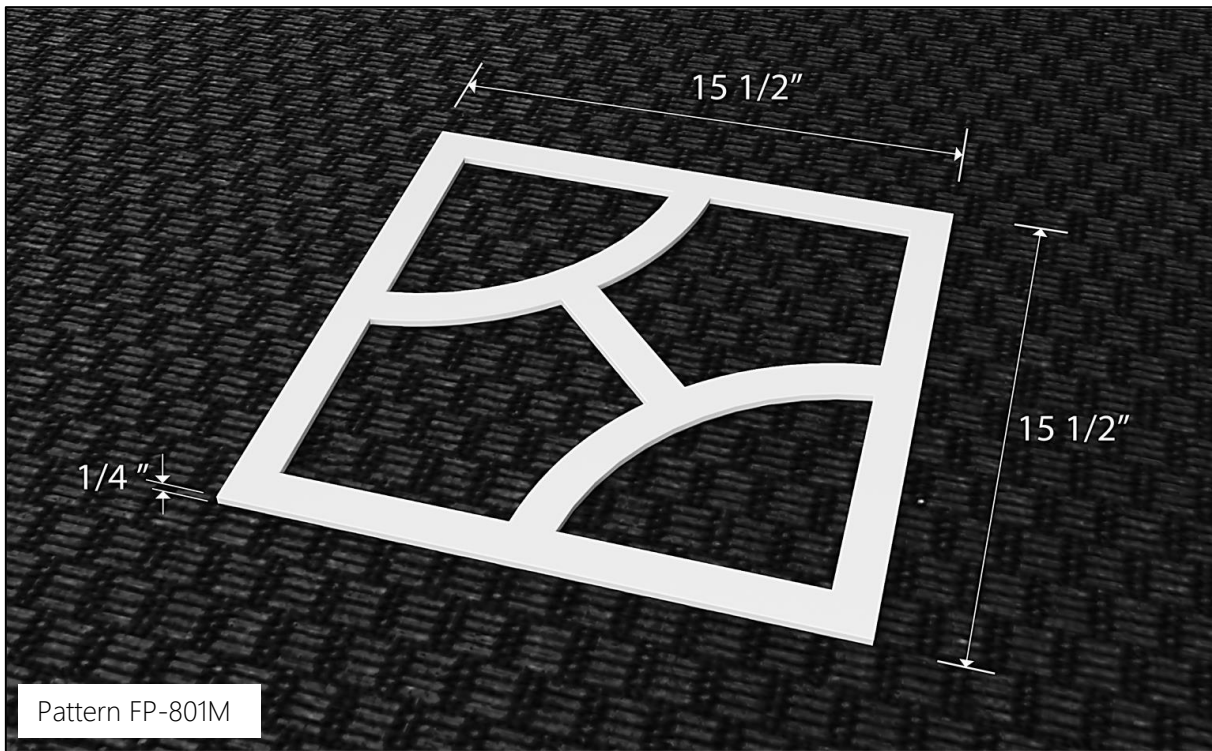




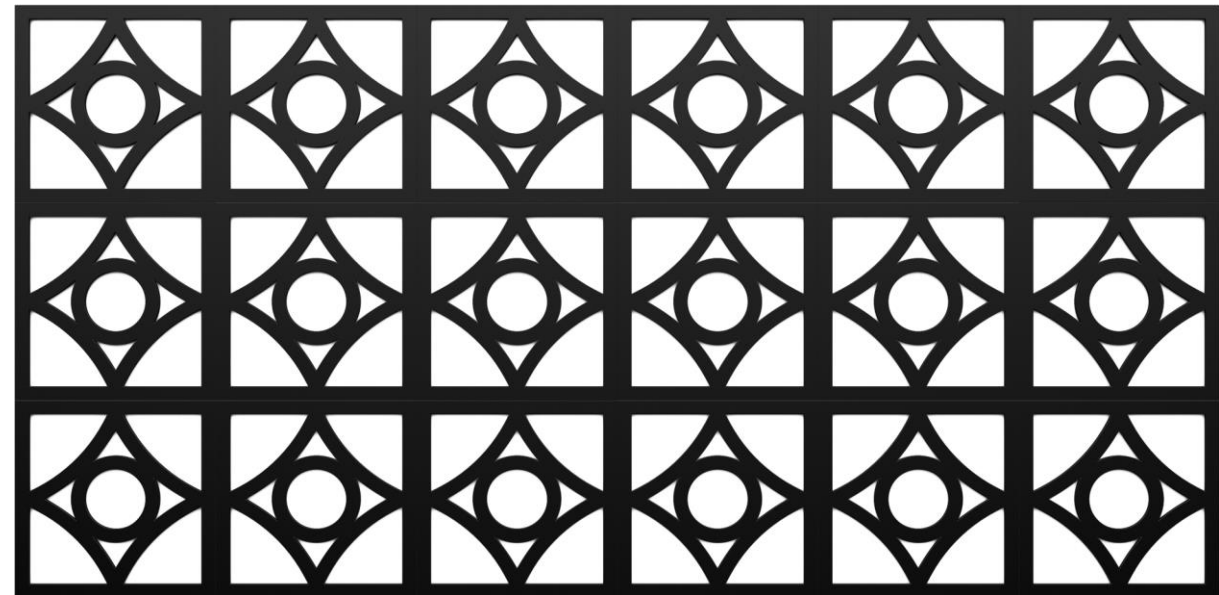
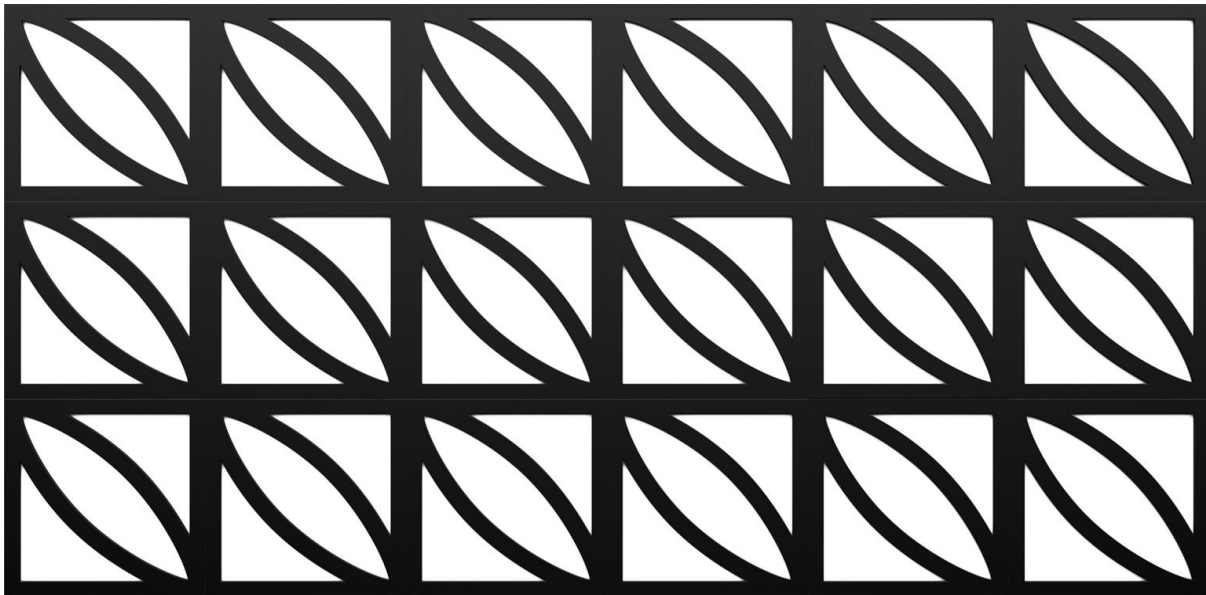
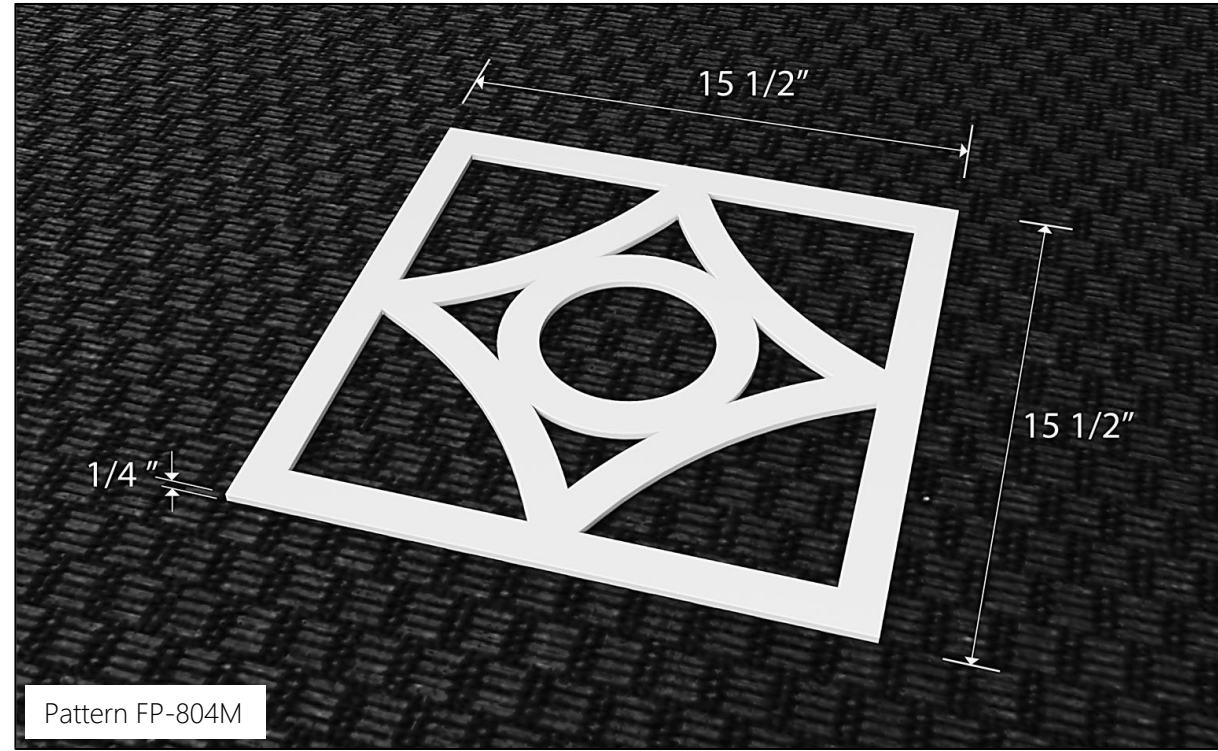
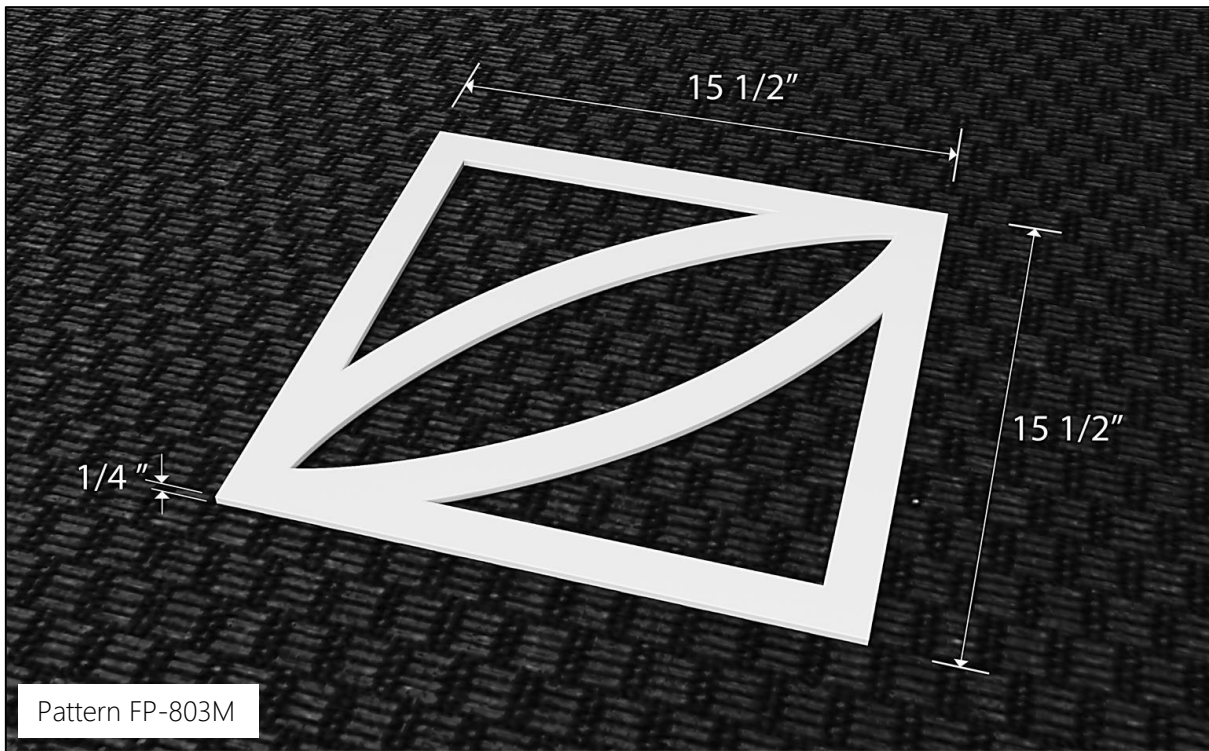


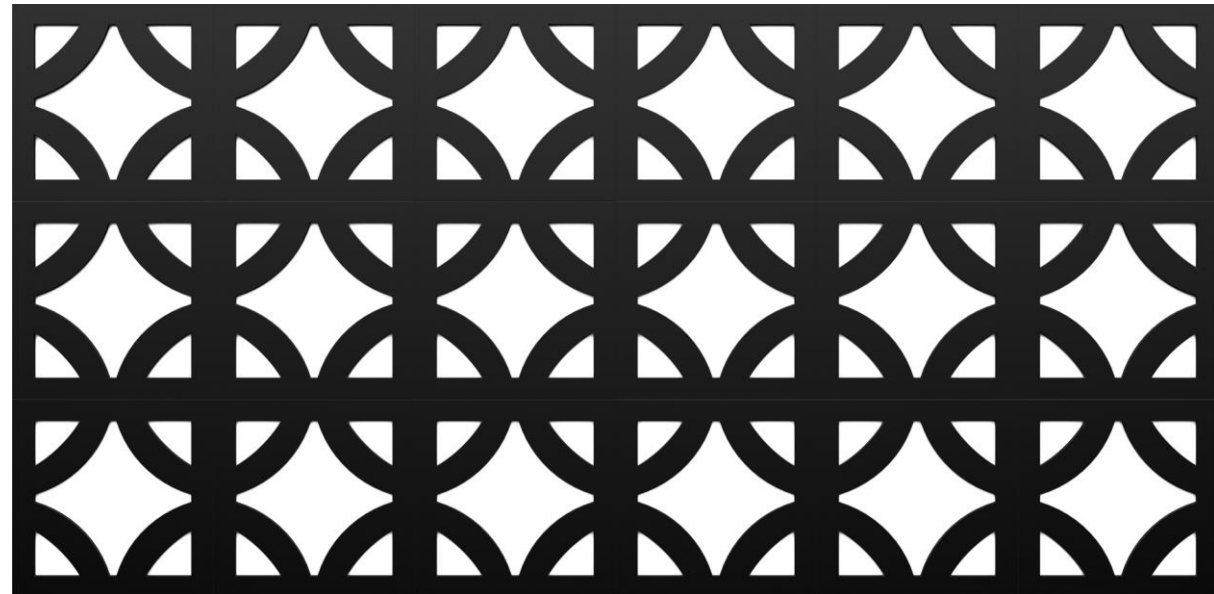
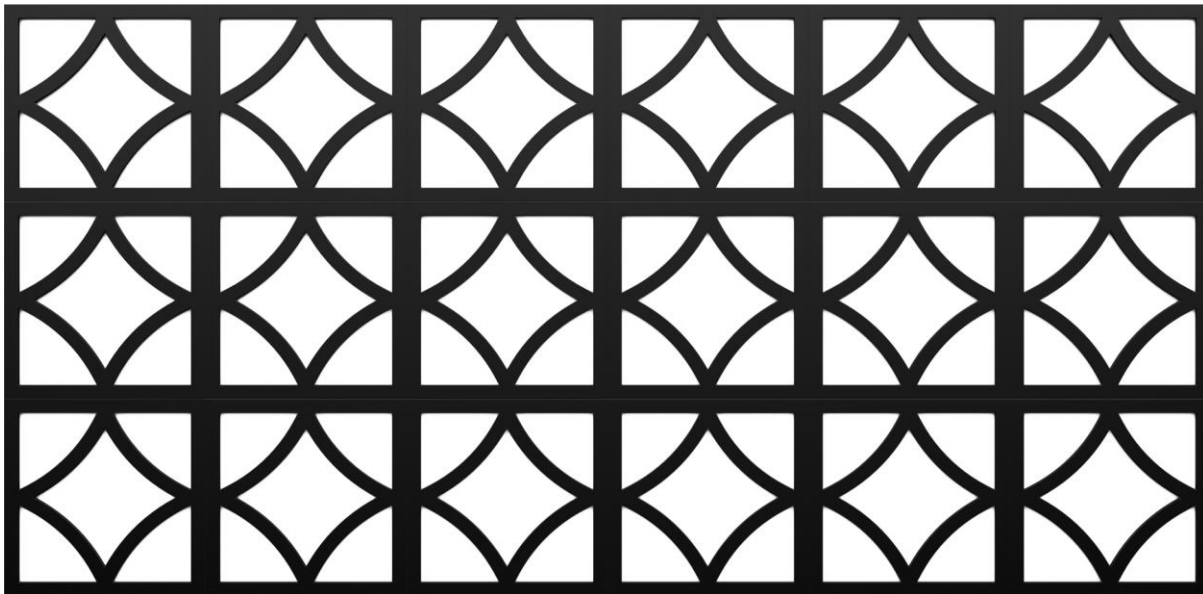
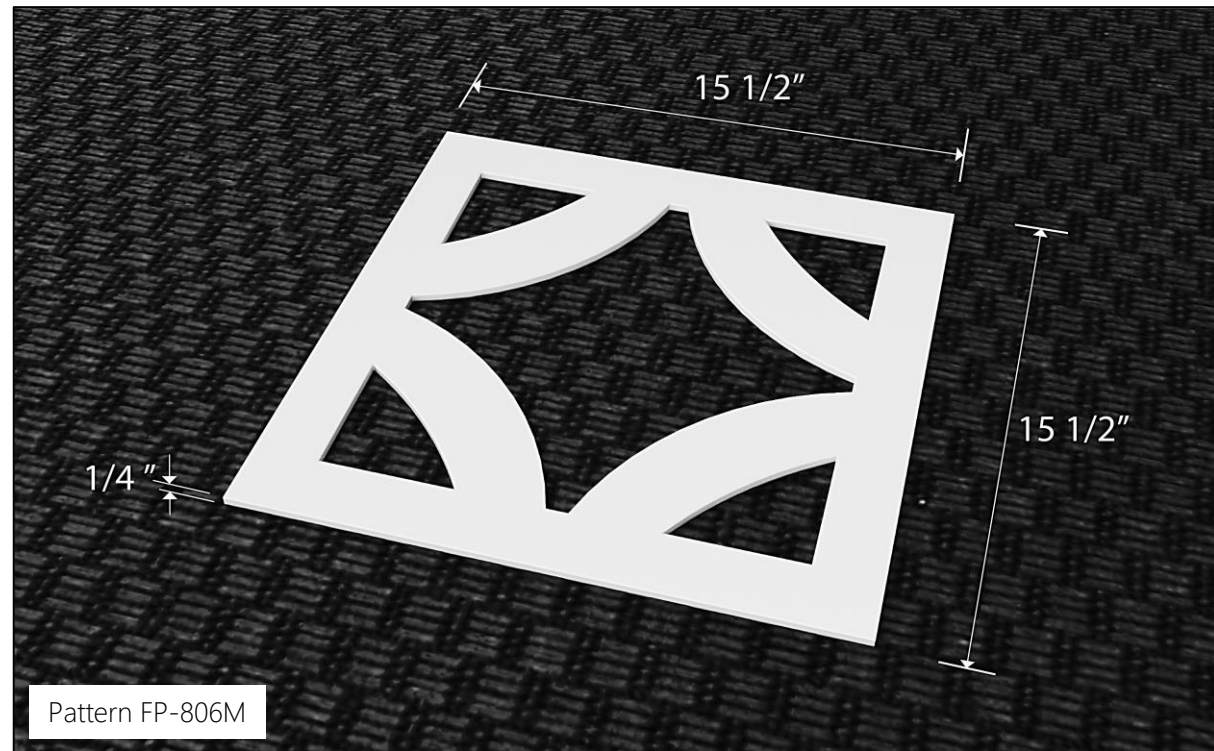
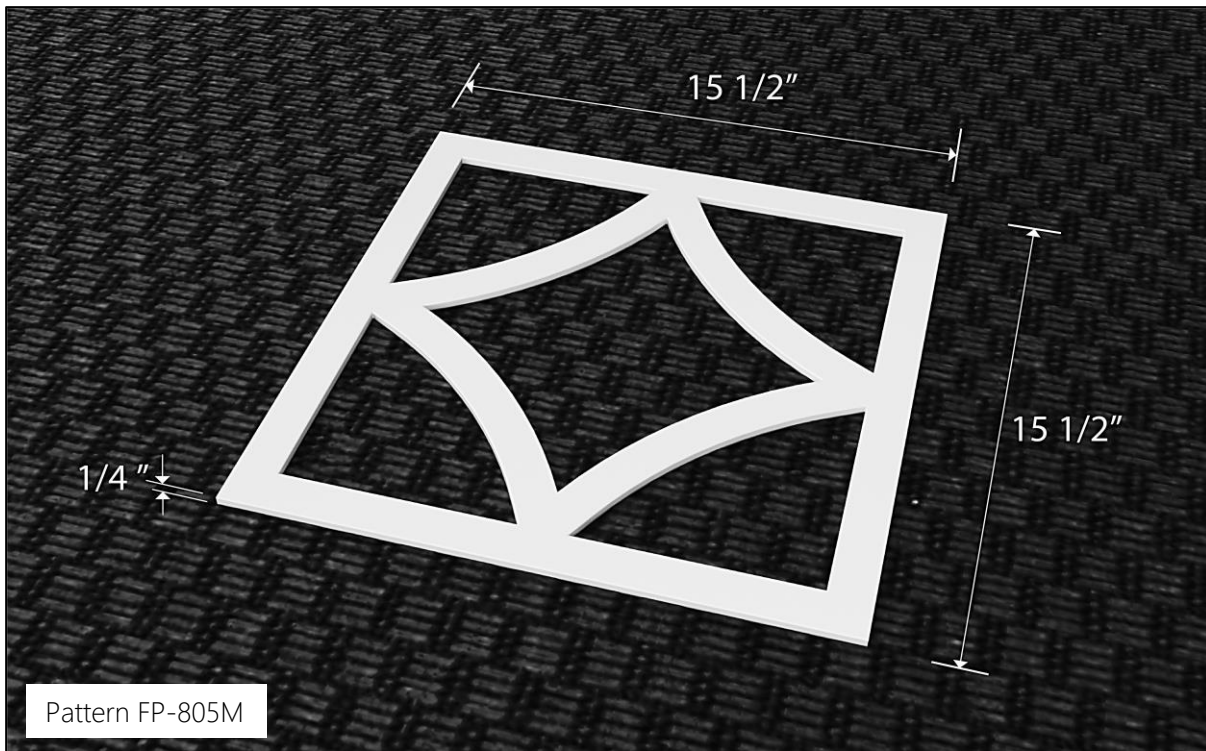
Collection Inspired by Mid Century Modern Breeze Block



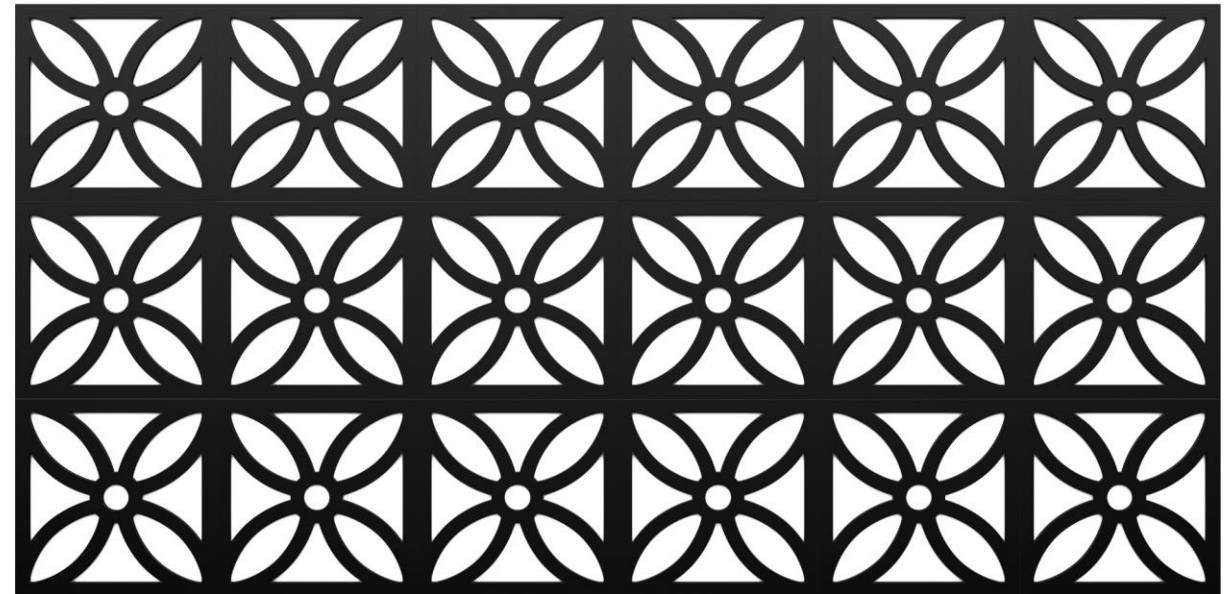
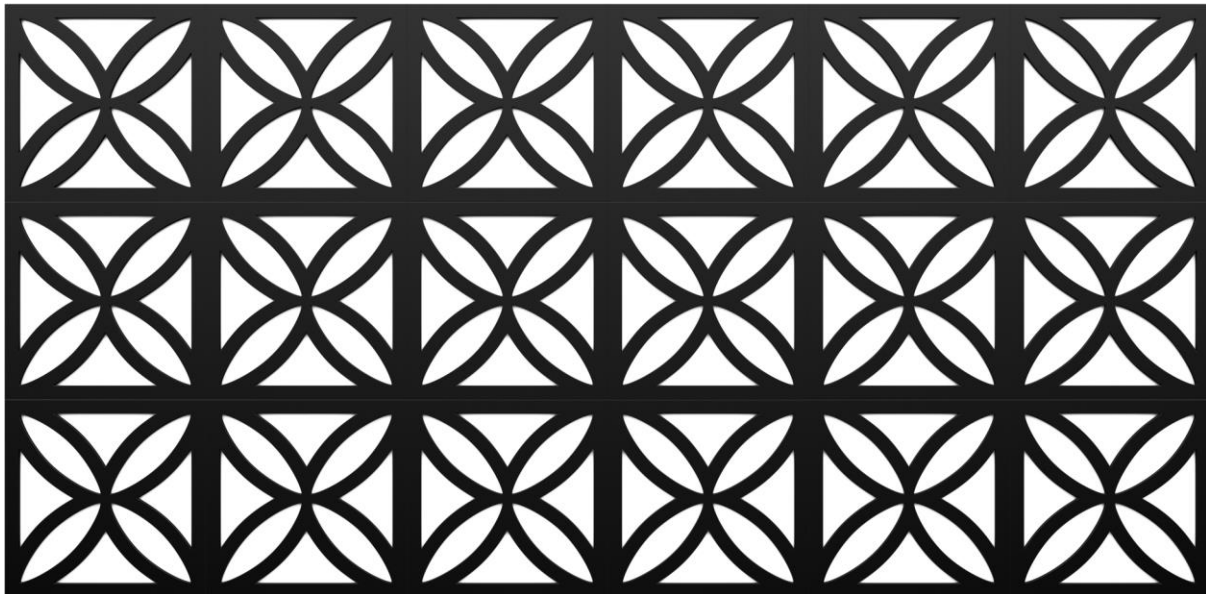
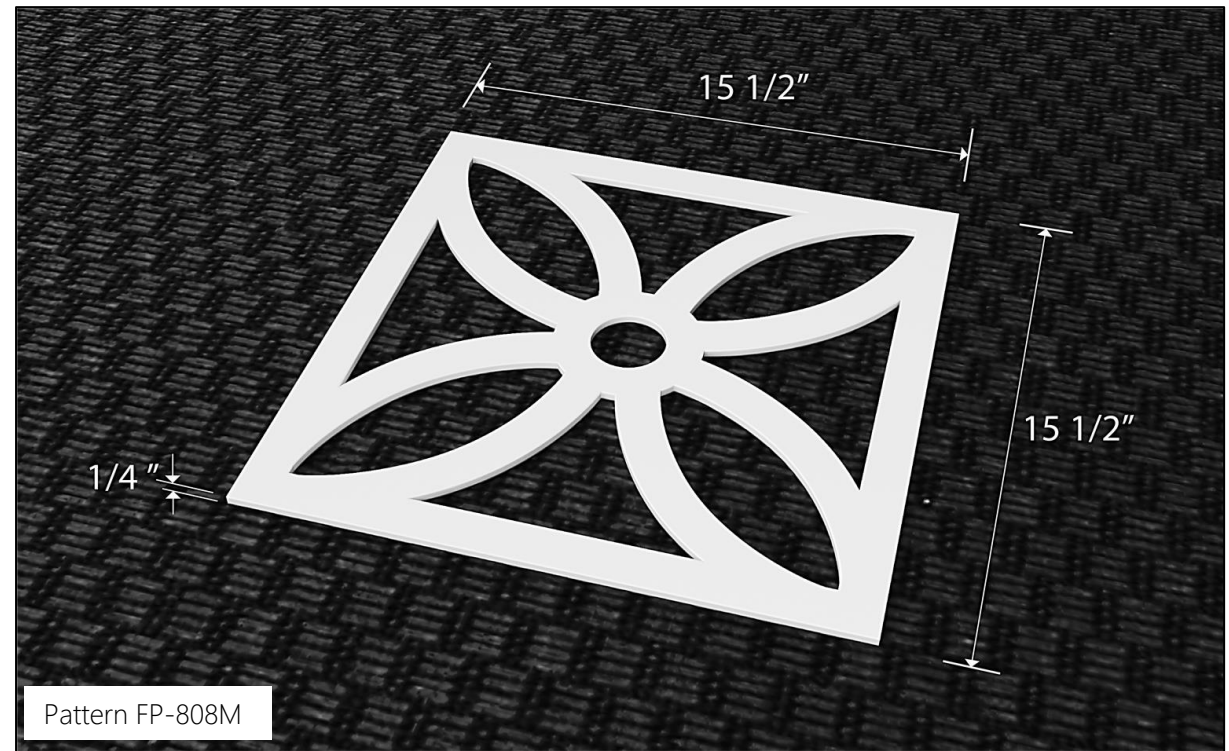
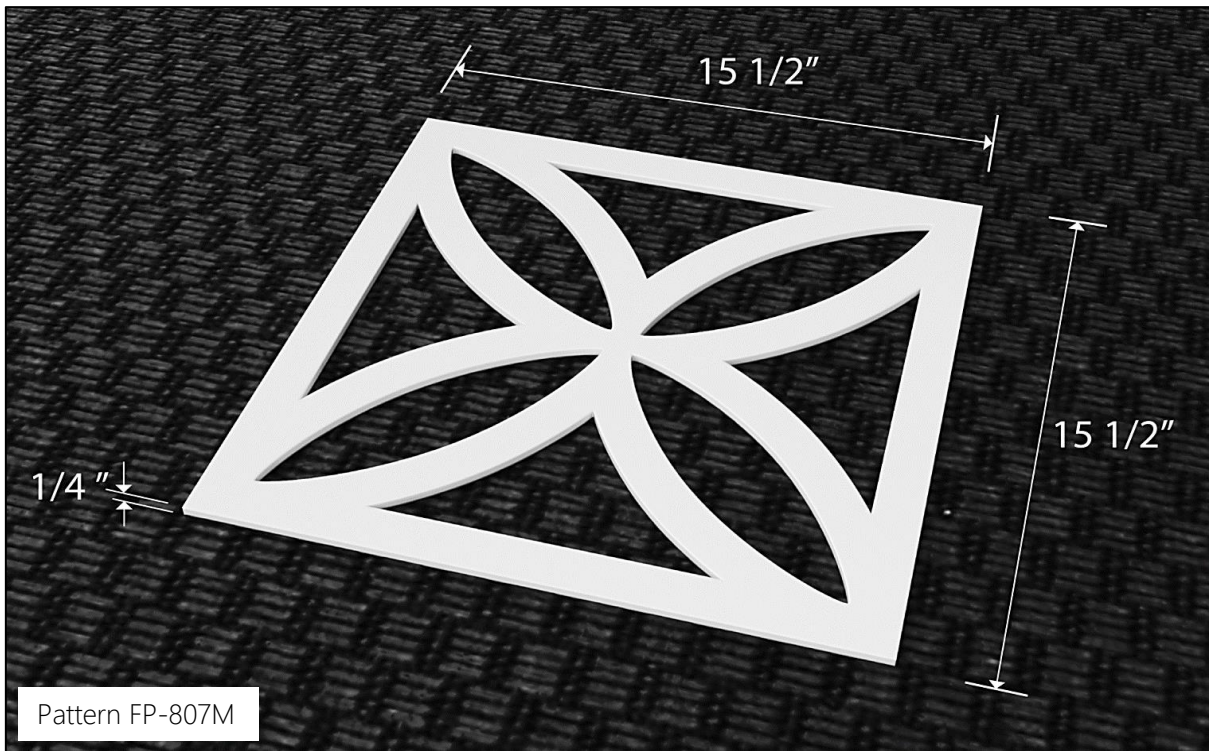


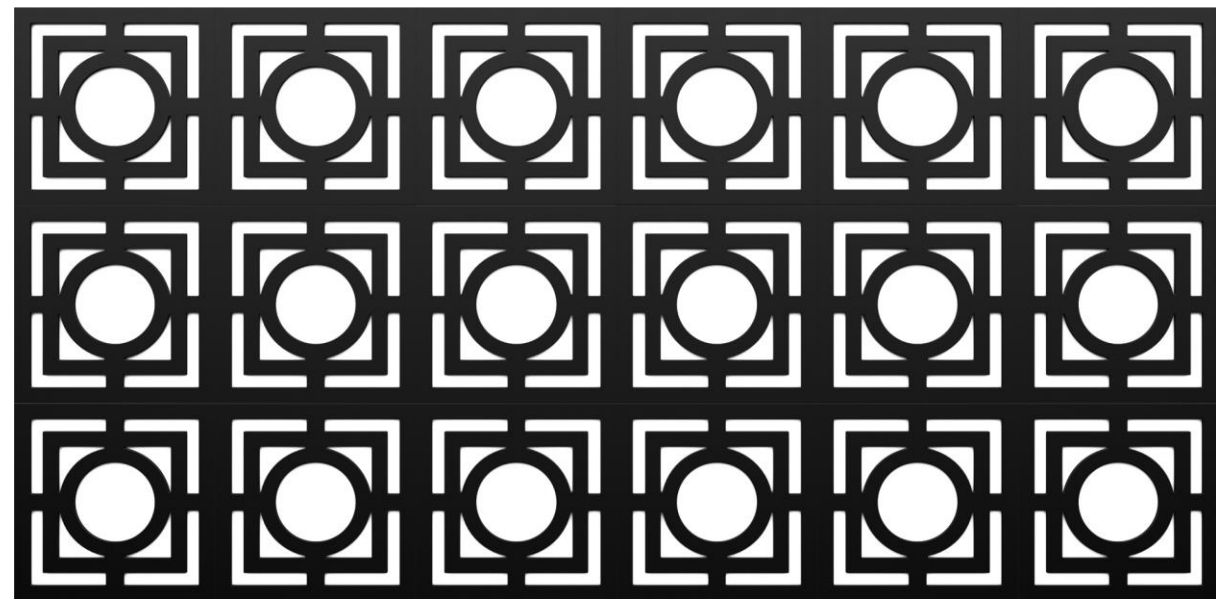
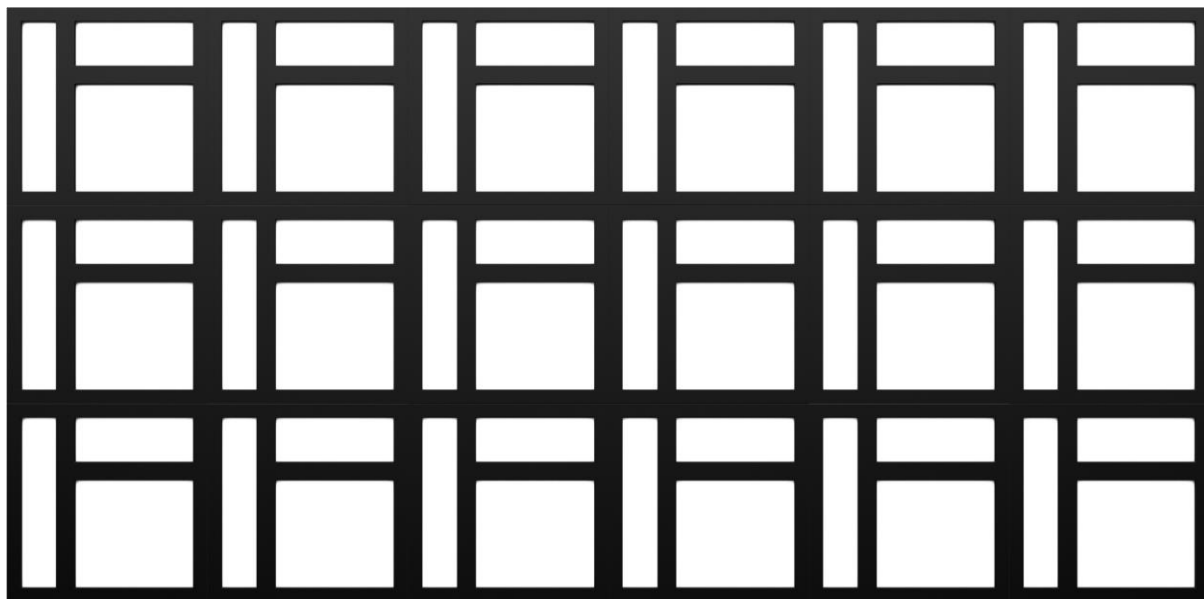
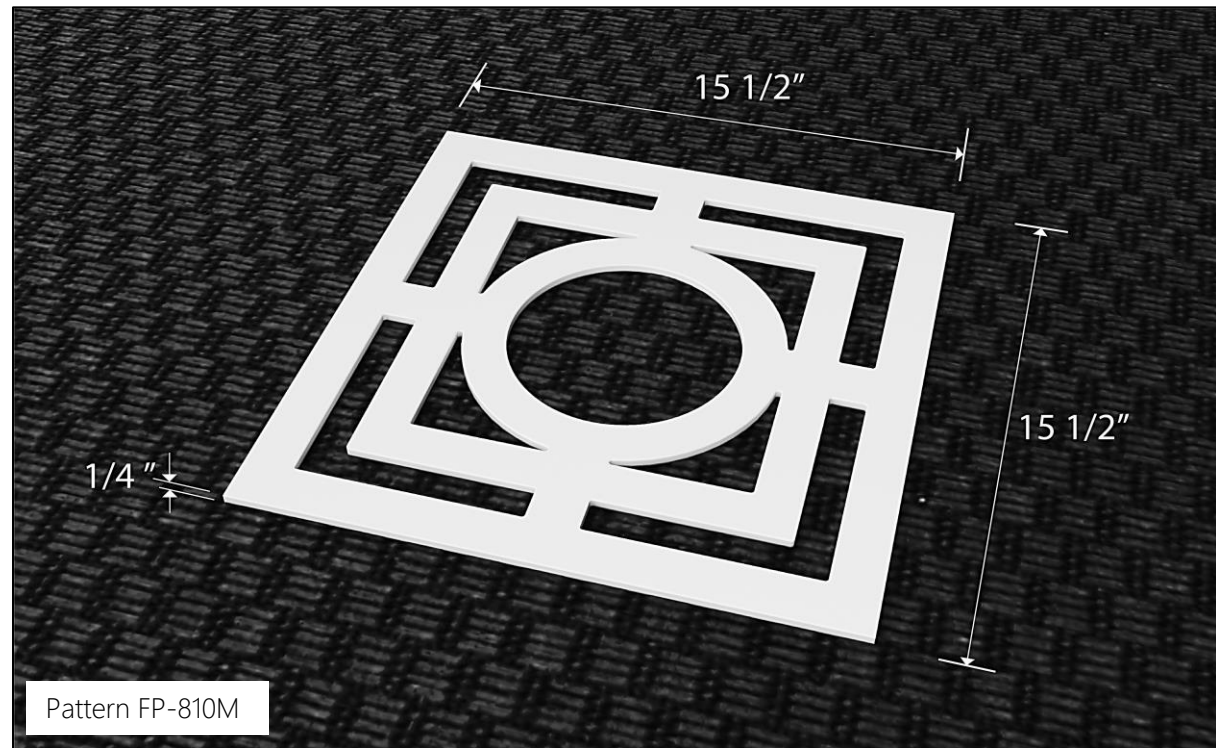
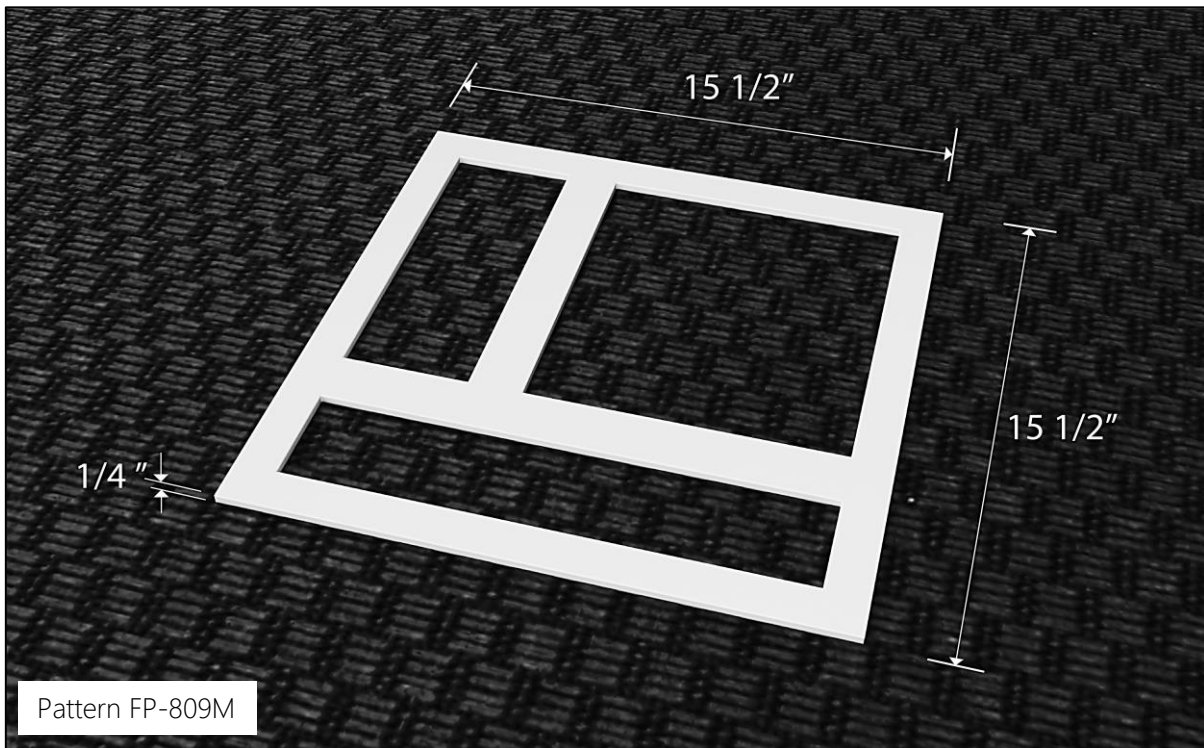




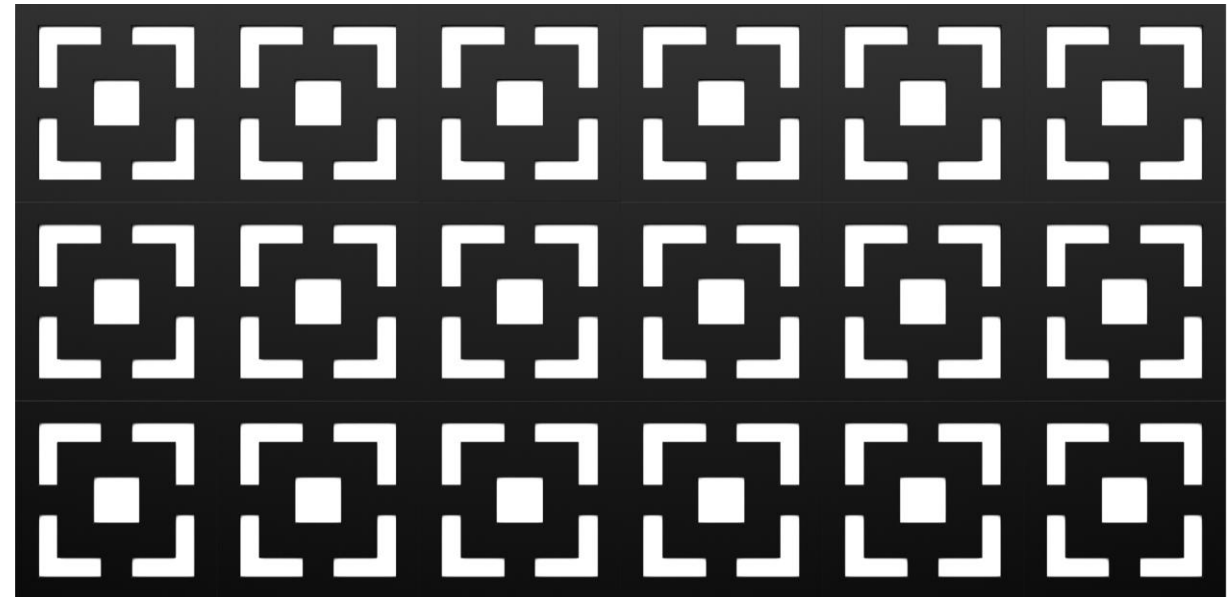
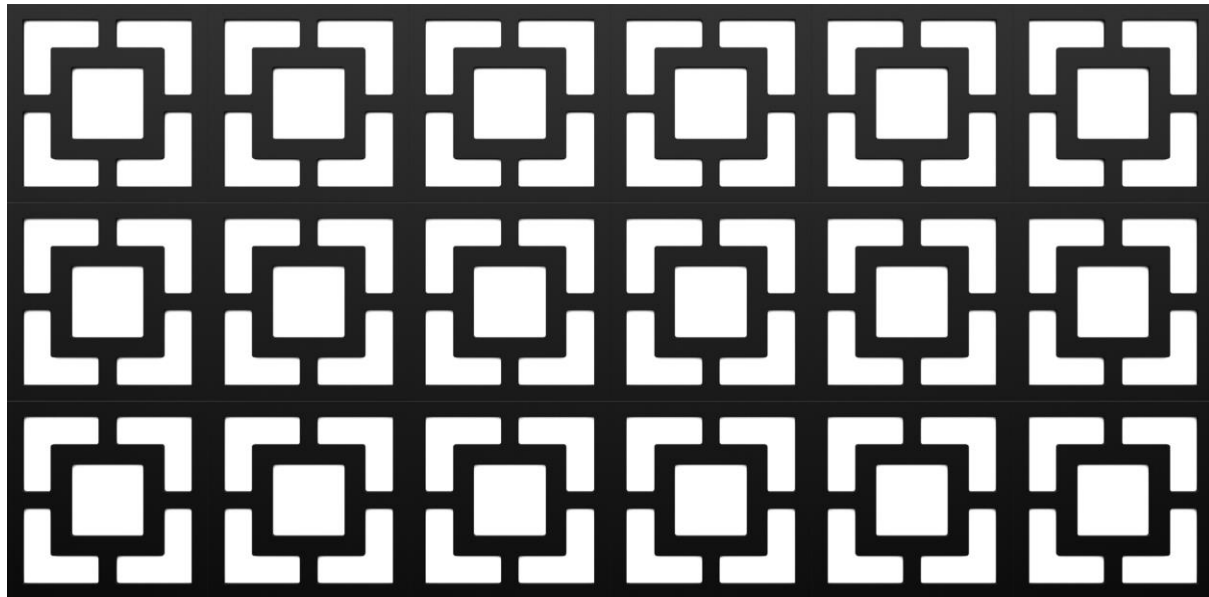
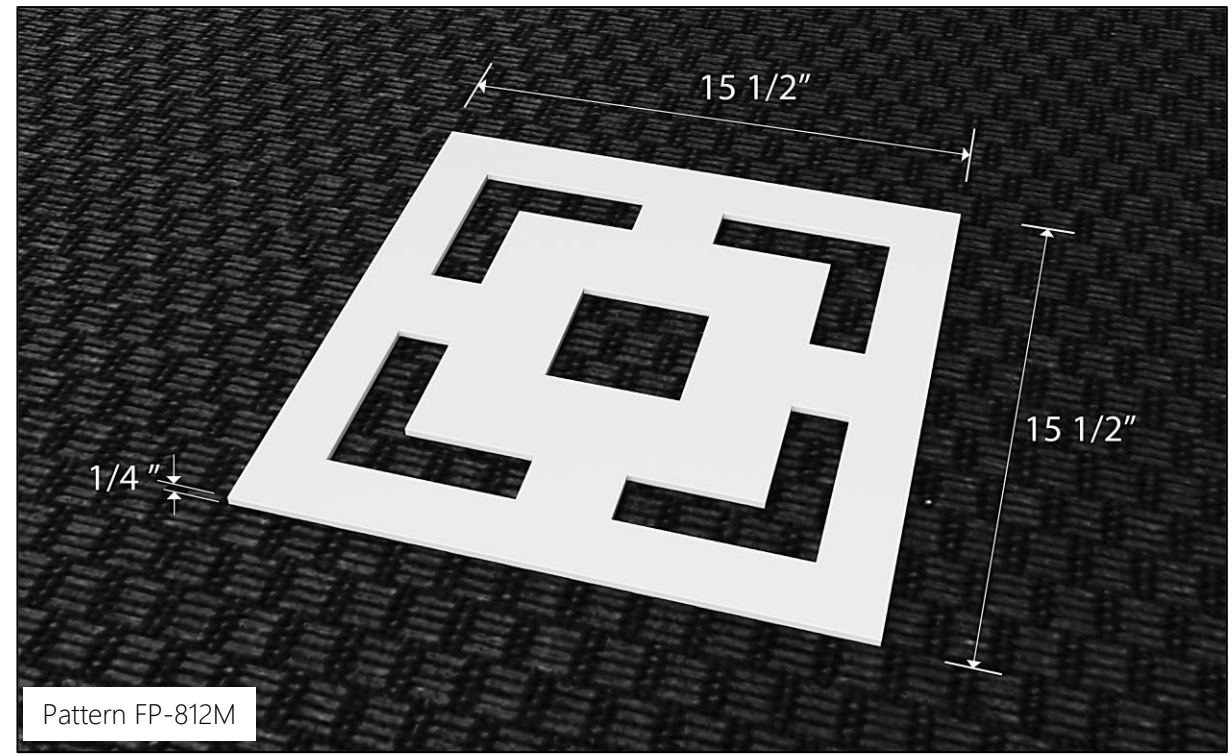
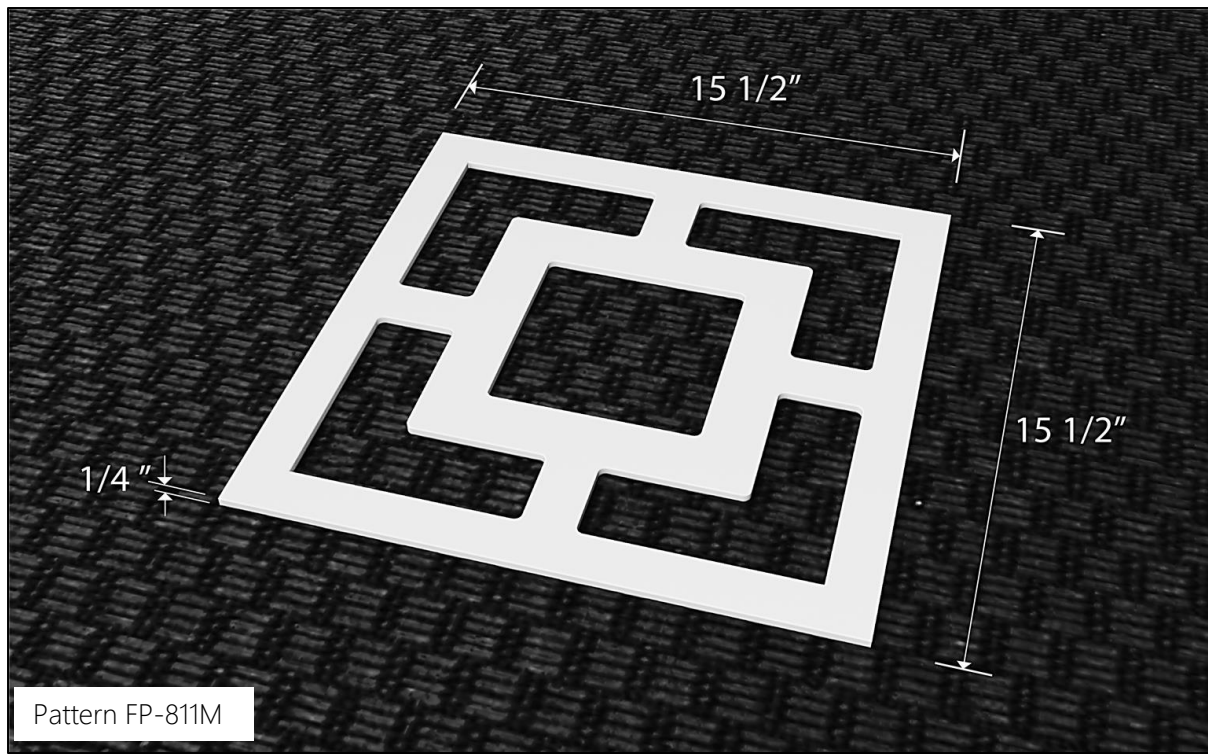






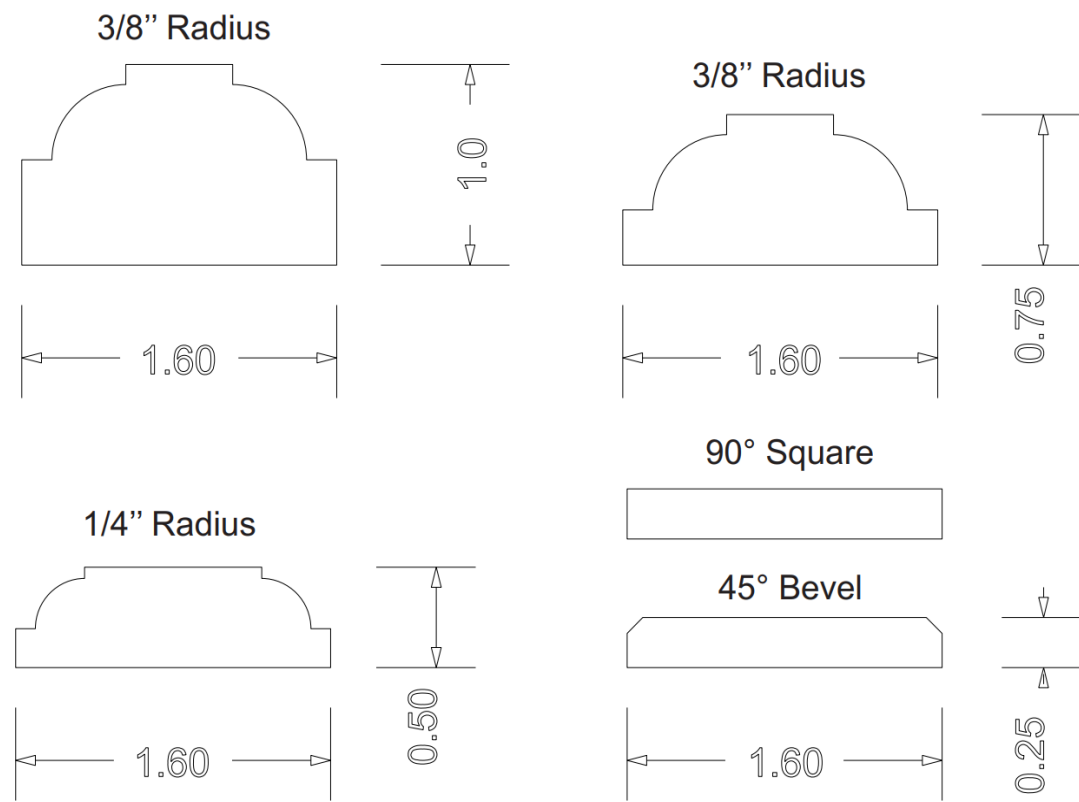






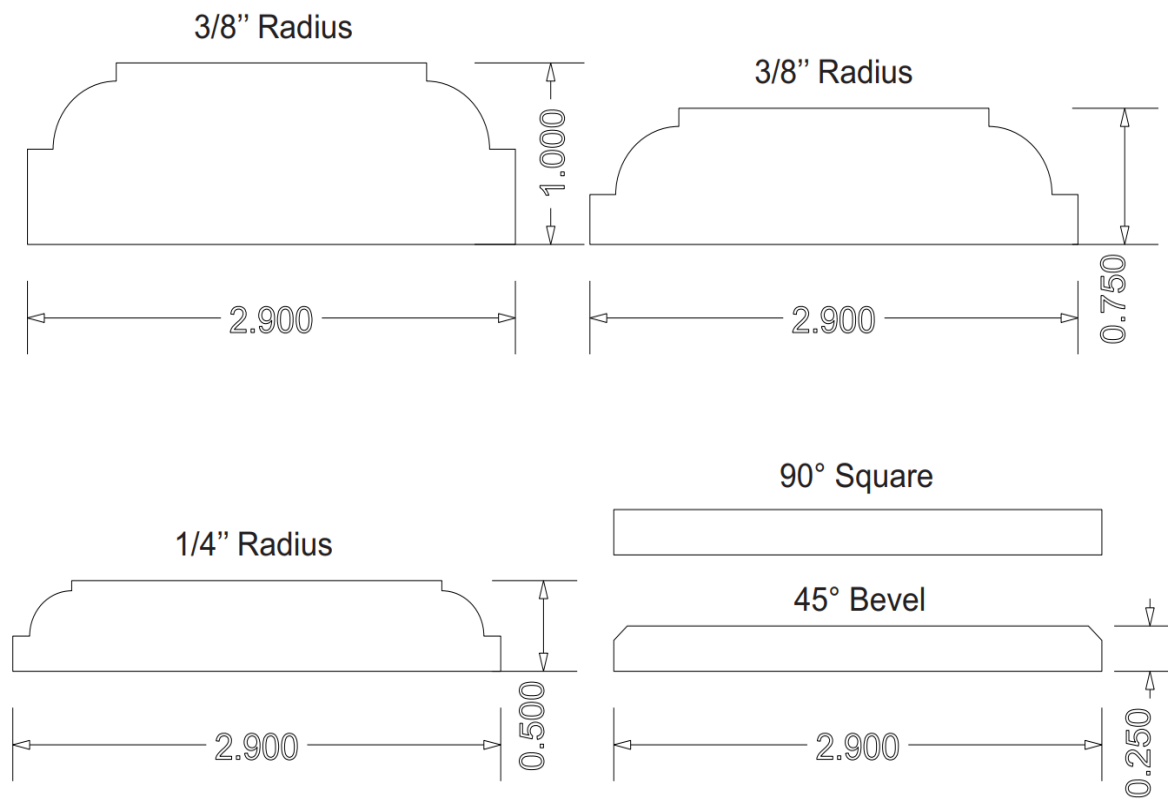
## STANDARD LARGE FORMAT PROFILE DETAILS (SMALL FORMAT N/A)

FP80, FP81, FP82, FP83, FP85, FP86, FP88, FP89, FP90



## STANDARD LARGE FORMAT PROFILE DETAILS (SMALL FORMAT N/A)

FP84





# FULLER

Architectural Panels

Pattern FP80 Shown

## Installation

- Install using conventional woodworking techniques.
- Carbide tipped blades are recommended for cutting.
- Standard PVC cements or Cellular PVC cements provide a strong bond.
- Glue all joints to prevent separation.

## Finishing

- 1" and 1-1/2" material must be painted.
- Wipe with acetone or similar prior to applying primer.
- Fill gaps and fastener holes with PVC approved caulk or similar prior to applying primer.
- Apply PVC approved primer prior to final topcoat of choice.

## Touch Up

- Recommend non-solvent based fillers such as all-purpose painter's putty or latex caulk.

## Storage and Handling

- Store items on a flat surface.
- Keep product free of dirt and debris. Clean using warm water and detergent.

## Additional

- Available Raw Material Colors: White & Black
- Available Thicknesses; 1/4", 1/2", 3/4", 1" and 1-1/2"
- Standard dimensions subject to change without notice.
- Allow 4-6 weeks to fulfill your order.

## Warranty

### 5 YEAR LIMITED WARRANTY FOR PVC PRODUCTS

Fuller Architectural Panels (hereinafter "Manufacturer") warrants that PVC products will not rot, split or suffer structural damage from termite or fungal decay for a period of ten (5) years from Fuller Architectural Panels. Fuller Architectural PVC Products are "Expanded Foam PVC (polyvinyl chloride) sheets. "Purchaser's sole remedy for any claim whatsoever, whether in contract, warranty, tort, or strict liability, arising out of the use, storage or possession of Fuller Architectural Panels, including without limitation any claim that Fuller Architectural Panels fail to perform as warranted, shall be replaced with Fuller Architectural Panels. To obtain replacement, the original owner must submit this warranty certificate, with the original purchase invoice indicating the date of purchase, picture of the defective product and detailed description to Fuller Architectural Panels, 2009 Fairview Road #6731 Raleigh, North Carolina 27628. MANUFACTURER'S LIABILITY UNDER WARRANTY IS LIMITED SOLELY TO REPLACEMENT OF DEFECTIVE PRODUCT. THIS WARRANTY SHALL NOT APPLY TO PRODUCT WHICH HAS NOT BEEN INSTALLED IN ACCORDANCE WITH INSTALLATION GUIDELINES SPECIFIED IN THE MANUFACTURER'S "INSTALLATION INSTRUCTIONS", OR TO PRODUCT WHICH HAS BEEN ABUSED, PLACED UNDER OR SUBJECTED TO ABNORMAL USE CONDITIONS OR USED, MODIFIED OR OTHERWISE TREATED IN ANY MANNER OTHER THAN AS INTENDED BY MANUFACTURER. IN NO EVENT SHALL MANUFACTURER BE LIABLE FOR LABOR, EXEMPLARY OR CONSEQUENTIAL DAMAGES OF ANY KIND WHATSOEVER PURCHASER IS SOLELY RESPONSIBLE FOR DETERMINING THE SUITABILITY OF USE OR APPLICATION OF ANY FULLER ARCHITECTURAL PRODUCT, OR WHETHER PRODUCT MEETS REQUIREMENTS OF APPLICABLE BUILDING CODES OR SAFETY CODES FOR SPECIFIC APPLICATIONS. No person or entity is Authorized by Manufacturer to make, and Manufacturer shall not be bound by any statement or representation as to the performance of Fuller Architectural Panels products other than amended or altered except in a written instrument signed by Manufacturer and Purchaser.

Fuller Architectural Panels, Inc. 919| 720-4252 [www.fullerap.com](http://www.fullerap.com)